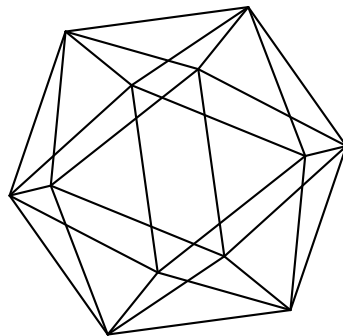


Max-Planck-Institut für Mathematik Bonn

Tropical mirror symmetry for elliptic curves

by

Janko Böhm
Kathrin Bringmann
Arne Buchholz
Hannah Markwig



Tropical mirror symmetry for elliptic curves

Janko Böhm
Kathrin Bringmann
Arne Buchholz
Hannah Markwig

Max-Planck-Institut für Mathematik
Vivatsgasse 7
53111 Bonn
Germany

Fachbereich Mathematik
Universität Kaiserslautern
Postfach 3049
67653 Kaiserslautern
Germany

Mathematical Institute
University of Cologne
Weyertal 86-90
50931 Cologne
Germany

Fachrichtung Mathematik
Universität des Saarlandes
Postfach 151150
66041 Saarbrücken
Germany

TROPICAL MIRROR SYMMETRY FOR ELLIPTIC CURVES

JANKO BÖHM, KATHRIN BRINGMANN, ARNE BUCHHOLZ, HANNAH MARKWIG

ABSTRACT. Mirror symmetry relates Gromov-Witten invariants of an elliptic curve with certain integrals over Feynman graphs [9]. We prove a tropical generalization of mirror symmetry for elliptic curves, i.e., a statement relating certain labeled Gromov-Witten invariants of a tropical elliptic curve to more refined Feynman integrals. This result easily implies the tropical analogue of the mirror symmetry statement mentioned above and, using the necessary Correspondence Theorem, also the mirror symmetry statement itself. In this way, our tropical generalization leads to an alternative proof of mirror symmetry for elliptic curves. We believe that our approach via tropical mirror symmetry naturally carries the potential of being generalized to more adventurous situations of mirror symmetry. Moreover, our tropical approach has the advantage that all involved invariants are easy to compute. Furthermore, we can use the techniques for computing Feynman integrals to prove that they are quasimodular forms. Also, as a side product, we can give a combinatorial characterization of Feynman graphs for which the corresponding integrals are zero. More generally, the tropical mirror symmetry theorem gives a natural interpretation of the A-model side (i.e., the generating function of Gromov-Witten invariants) in terms of a sum over Feynman graphs. Hence our quasimodularity result becomes meaningful on the A-model side as well. Our theoretical results are complemented by a SINGULAR package including several procedures that can be used to compute Hurwitz numbers of the elliptic curve as integrals over Feynman graphs.

CONTENTS

1. Introduction	2
2. Tropical Mirror Symmetry for elliptic curves	5
2.1. Mirror Symmetry for elliptic curves	5
2.2. Tropical covers and Hurwitz numbers	7
2.3. Labeled tropical covers	9
2.4. The propagator	14
2.5. The bijection	17
3. Quasimodularity	22
4. Appendix	25
4.1. Correspondence theorem	25
4.2. Implementation in Singular	33
References	35

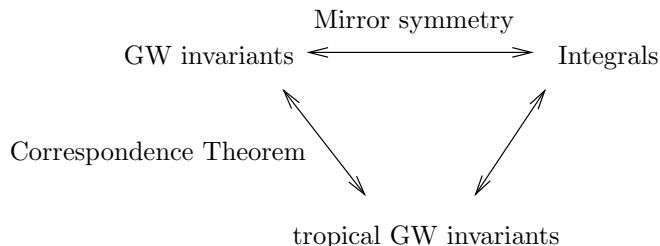
Key words and phrases. Mirror symmetry, elliptic curves, Feynman integral, tropical geometry, Hurwitz numbers, quasimodular forms.

2010 Math subject classification: Primary 14J33, 14N35, 14T05, 11F11, 81T18; Secondary 14H30, 14N10, 14H52, 14H81.

1. INTRODUCTION

Mirror symmetry is a deep symmetry relation motivated by dualities in string theory. Many results and conjectures of different flavors are related to mirror symmetry (see e.g. [12, 13, 15, 19, 24, 26, 27]). Here, we focus on statements relating Gromov-Witten invariants of a variety X to certain integrals on a mirror partner X^\vee .

Tropical geometry has proved to be an interesting new tool for mirror symmetry (see e.g. [1, 14–16, 24]). Our paper can be viewed as a sequel and extension of Gross' paper [14], where he provides tropical methods for the study of mirror symmetry of \mathbb{P}^2 . The main purpose of his paper is of a philosophical nature: he suggests tropical geometry as a new and worthwhile method for the study of mirror symmetry. More precisely, you can find (a version of) the following triangle in the introduction of [14]:



The relation between Gromov-Witten invariants and integrals (the top arrow) is a consequence of mirror symmetry. Tropical geometry comes in naturally, because there are many instances of Correspondence Theorems that relate Gromov-Witten invariants with their tropical analogues (the first of these is due to Mikhalkin [23]). The connection between tropical geometry and integrals is in general yet to be understood.

Gross studies the triangle in the situation of \mathbb{P}^2 : here, the mirror is $(\mathbb{C}^*)^2$. For this case, statements relating Gromov-Witten invariants to integrals are known already [3]; but again, the purpose is to a lesser extent to give a new proof of this mirror symmetry relation, but to outline a new path for future progress in mirror symmetry. In the case of \mathbb{P}^2 , the mirror symmetry relation involves descendant Gromov-Witten invariants of \mathbb{P}^2 . Only a partial Correspondence Theorem is proved to relate some of these invariants to their tropical counterparts [22]. Gross concentrates on proving the right arrow in his situation, i.e., he provides a natural connection between integrals and tropical Gromov-Witten invariants. This connection very roughly relates monomials in a big generating function that yield a nonzero contribution to an integral with pieces of tropical curves that glue to one big tropical curve satisfying the requirements. The heart of the argument is thus a purely combinatorial hunt of monomials respectively pieces of tropical curves, and the fact that both sides can be boiled down to combinatorics that fits together very naturally strongly recommends the tropical approach for future experiments in mirror symmetry. However, since the existing Correspondence Theorems are not sufficient yet to cover the whole situation needed for mirror symmetry of \mathbb{P}^2 , this exciting new approach does not give an alternative proof of the mirror symmetry statement for \mathbb{P}^2 (the top arrow) yet.

It is our purpose to demonstrate that tropical geometry can actually lead to a complete alternative proof of mirror symmetry, and that this approach is very natural and requires not much more than a careful analysis of the underlying combinatorics. We prove a tropical mirror symmetry theorem for tropical elliptic curves that in particular implies mirror symmetry for elliptic curves. Furthermore, we pursue our approach to prove new results about the involved generating functions, most importantly the

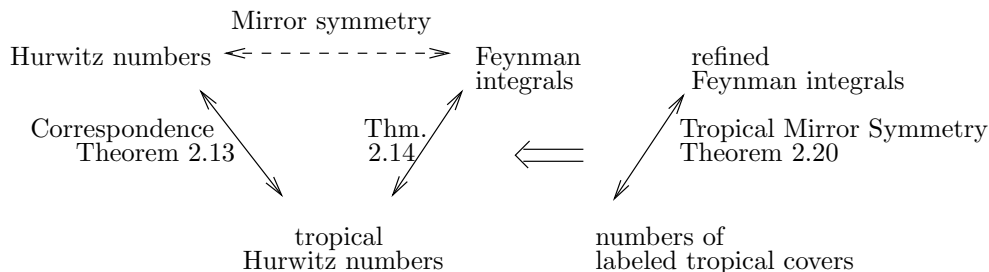
quasimodularity of certain Feynman integrals resp. generating functions of Hurwitz numbers.

We study the triangle above for elliptic curves. As in the case of \mathbb{P}^2 , mirror symmetry of elliptic curves is known and can to the best of our knowledge even be considered as folklore in mirror symmetry [9], i.e., in principle the top arrow is taken care of already (see Theorem 2.6). The known proof is inspired by physics and uses quantum field theory.

We provide the alternative route via the left and right arrows. The Gromov-Witten invariants involved in the upper left vertex of the triangle are nothing but Hurwitz numbers — numbers of covers of an elliptic curve having simple ramification above some fixed branch points. The integrals in the upper right vertex are certain integrals over Feynman graphs.

Correspondences between Hurwitz numbers and their tropical counterparts have been studied [4, 7], and an easy generalization yields a Correspondence Theorem that is suitable for our situation (see Theorem 2.13). As in the case of \mathbb{P}^2 , most exciting is the right arrow. It turns out that a more general formulation of mirror symmetry is more natural on the tropical side. We prove a tropical mirror symmetry theorem (Theorem 2.20) relating numbers of labeled tropical covers with refined Feynman integrals. A careful analysis of the combinatorial principles underlying the count of labeled tropical covers on the one hand and nonzero contributions to refined integrals over Feynman graphs on the other hand reveals that they can be related very naturally. The right arrow then follows easily from our tropical mirror symmetry theorem, see Theorem 2.14. We consider the Tropical Mirror Symmetry Theorem 2.20 (and its consequences) to be the most important contribution of this paper.

To sum up, for the case of elliptic curves, we complete the picture of the triangle as follows:



We provide proofs for all solid arrows, in particular this implies the dashed arrow, the mirror symmetry statement for elliptic curves. We thus provide a complete and very natural combinatorial proof of mirror symmetry for elliptic curves by means of tropical geometry. We believe that our theorem and its consequences should be viewed as a recommendation for tropical geometry tools for mirror symmetry.

While our method of proof may at the first glance seem similar to the method used in [14] — a combinatorial hunt of monomials in a big generating function on one side, and tropical covers on the other side — the details are very different in the situation of an elliptic curve. Also, our tropical mirror symmetry statement provides more than the proof of the right arrow — we generalize the statement to labeled tropical covers and refined integrals. We were inspired by [14], but nevertheless our result is beyond a mere generalization of this paper, and hopefully will shed more light on other more adventurous situations of mirror symmetry. Note that our case is the first instance

where tropical mirror symmetry is understood for a compact Calabi-Yau variety, and for arbitrary genus Gromov-Witten invariants.

Furthermore, our study of Feynman integrals can be pursued in another direction related to number theory. In number theory, the study of modular forms and quasimodular forms is of great interest. Let us just mention a few examples. In VOA theory, 1-point functions are quasimodular [10]. Conversely, every quasimodular form can be written in terms of 1-point functions. Further examples occur in the study of $sl(n|n)^\wedge$ characters [6] or in curve counting problems on Abelian surfaces (see e.g. [2]). Knowing modularity results presents one with deep tools, like Sturm's Theorem or the valence formula, to prove identities, congruences, or the asymptotic behavior of arithmetically interesting functions. Most relevant for this paper is that the generating function for Hurwitz numbers of elliptic curves is a quasimodular form (see e.g. [9], [18]). Via mirror symmetry, this generating function equals a sum of Feynman integrals, where each summand corresponds to a graph. To the best of our knowledge, the quasimodularity of the individual summands has not been known. We close this gap by proving the quasimodularity for each summand corresponding to a graph, more precisely, for the summands $I_{\Gamma,\Omega}$ as defined in Definition 2.5, Equation (2.1):

Theorem 1.1. *For all Feynman graphs Γ and orders Ω as in Definition 2.5, the function $I_{\Gamma,\Omega}$ is a quasimodular form.*

For a precise formulation, see Theorem 3.2. Other Feynman integrals related to mirror symmetry have been proved to be quasimodular forms, too [21].

Note that the Tropical Mirror Symmetry Theorem naturally gives an interpretation of the generating function of Hurwitz numbers in terms of a sum over Feynman graphs — we can sum over all tropical covers whose combinatorial type is a fixed Feynman graph. In this way, our quasimodularity result becomes meaningful on the A-model side as well: The generating function of Hurwitz numbers for a fixed combinatorial type is quasimodular. We believe that this result is another major contribution of our paper.

As a side product we also give a combinatorial characterization of graphs whose corresponding Feynman integral is zero: we prove in Corollary 2.35 that a graph yields a zero Feynman integral if and only if it contains a bridge.

Our theoretical results are complemented by a SINGULAR package including several procedures that can be used to compute Hurwitz numbers of the elliptic curve resp. integrals over Feynman graphs.

We believe that it is a merit of the tropical approach that computations are of a combinatorial flavor and easily accessible. We describe all constructions and computations in this paper in a hands-on way that should be easy to follow using the examples we give. All our computations can be reconstructed using our SINGULAR package. We consider it another important contribution of our paper that we made mirror symmetry of elliptic curves computationally accessible.

Our paper is organized as follows. In Section 2.1 we define the invariants and state the Mirror Symmetry Theorem 2.6, i.e., the top arrow in the triangle above. In Section 2.2 we define tropical Hurwitz numbers and state the Correspondence Theorem 2.13, i.e., the left arrow in the triangle. We also state Theorem 2.14, the right arrow in the triangle. In Section 2.3, we introduce the invariants involved in our generalization of theorem 2.14: labeled tropical covers (tropical covers with some extra structure) and

a more refined version of the Feynman integrals. In the same section, we can finally also state our main result, the Tropical Mirror Symmetry Theorem 2.20 involving labeled tropical covers and refined Feynman integrals. We also deduce Theorem 2.14 using Theorem 2.20. In Section 2.4, we take a closer look at the involved Feynman integrals. A central statement is Theorem 2.22 that expresses the propagator as a series in a special nice way. This helps us to boil down the computation of the refined Feynman integrals (using a coordinate change and the residue theorem) to a purely combinatorial hunt of monomials in a big generating function. The precise statement of the monomial hunt can be found in Lemma 2.24. In Section 2.5 finally, we establish our bijection relating labeled tropical covers and nonzero contributions to refined Feynman integrals. The precise formulation can be found in Theorem 2.30, Theorem 2.20 follows easily from this. Construction 2.31 gives a hands-on algorithm how to produce a tropical cover given a tuple contributing to the integral, Lemmas 2.33 and 2.34 prove that this algorithm indeed produces a bijective map. In Section 3 we prove the quasimodularity of the summands of the generating function of Hurwitz numbers corresponding to Feynman graphs. The proof relies on a statement deduced in Section 2.4.

In part 4.1 of the Appendix, we prove the Correspondence Theorem 2.13. It could be deduced from the Correspondence Theorem in [4], for the sake of completeness however we include our own proof here which uses combinatorial methods involving the symmetric group.

In part 4.2 of the Appendix, we describe our SINGULAR package that can be used to compute Hurwitz numbers of elliptic curves resp. Feynman integrals.

Acknowledgements. We would like to thank Arend Bayer, Erwan Brugallé, Albrecht Klemm, Laura Matusevich and Rainer Schulze-Pillot for helpful discussions. Part of this work was accomplished during the third and fourth author's stay at the Max-Planck-Institute for Mathematics in Bonn. We thank the MPI for hospitality. The research of the second author was supported by the Alfried Krupp prize for young University Teachers of the Krupp foundation and a grant by the ERC. The fourth author is partially supported by DFG-grant MA 4797/3-2.

2. TROPICAL MIRROR SYMMETRY FOR ELLIPTIC CURVES

2.1. Mirror Symmetry for elliptic curves. In this subsection, we define the relevant invariants (i.e., Hurwitz numbers and Feynman integrals) and present a precise statement of the top arrow of the triangle in the introduction.

Hurwitz numbers count branched covers of non-singular curves with a given ramification profile over fixed points. In this paper, we consider covers of elliptic curves. Hurwitz numbers are naturally topological invariants, in particular they do not depend on the position of the branch points as long as these are pairwise different. Moreover, since all complex elliptic curves are homeomorphic to the real torus, numbers of covers of an elliptic curve do not depend on the choice of the base curve. We thus fix an arbitrary complex elliptic curve \mathcal{E} .

Let \mathcal{C} be a non-singular curve of genus g and $\phi : \mathcal{C} \rightarrow \mathcal{E}$ a cover. We denote by d the degree of ϕ , i.e., the number of preimages of a generic point in \mathcal{E} . For our purpose, it is sufficient to consider covers which are *simply ramified*, that is, over any branch point exactly two sheets of the map come together and all others stay separate. In other words, the *ramification profile* (i.e. the partition of the degree indicating the multiplicities of the inverse images of a branch point) of a simple branch point is

$(2, 1, \dots, 1)$. It follows from the Riemann-Hurwitz formula (see e.g. [17], Corollary IV.2.4) that a simply ramified cover of \mathcal{E} has exactly $2g - 2$ branch points. Two covers $\varphi : \mathcal{C} \rightarrow \mathcal{E}$ and $\varphi' : \mathcal{C}' \rightarrow \mathcal{E}$ are isomorphic if there exists an isomorphism of curves $\phi : \mathcal{C} \rightarrow \mathcal{C}'$ such that $\varphi' \circ \phi = \varphi$.

Definition 2.1 (Hurwitz numbers). Fix $2g - 2$ points p_1, \dots, p_{2g-2} in \mathcal{E} . We define the *Hurwitz number* $N_{d,g}$ to be the weighted number of (isomorphism classes of) simply ramified covers $\phi : \mathcal{C} \rightarrow \mathcal{E}$ of degree d , where \mathcal{C} is a connected curve of genus g , and the branch points of ϕ are the points p_i , $i = 1, \dots, 2g - 2$. We count each such cover ϕ with weight $|\text{Aut}(\phi)|$.

For more details on branched covers of elliptic curves and Hurwitz numbers, see e.g. [25].

Remark 2.2. Note that by convention, we mark the branch points p_i in this definition. In the literature, you can also find definitions without this convention, leading to a factor of $(2g - 2)!$ when compared with our definition.

Definition 2.3. We package the Hurwitz numbers of Definition 2.1 into a generating function as follows:

$$F_g(q) := \sum_{d=1}^{\infty} N_{d,g} q^{2d}.$$

The mirror symmetry statement relates the generating function $F_g(q)$ to certain integrals which we are going to define now. We start by defining the function which we are going to integrate.

Definition 2.4 (The propagator). We define the *propagator*

$$P(z, q) := \frac{1}{4\pi^2} \wp(z, q) + \frac{1}{12} E_2(q^2)$$

in terms of the Weierstraß-P-function \wp and the Eisenstein series

$$E_2(q) := 1 - 24 \sum_{d=1}^{\infty} \sigma(d) q^d.$$

Here, $\sigma = \sigma_1$ denotes the sum-of-divisors function $\sigma(d) = \sigma_1(d) = \sum_{m|d} m$.

The variable q above should be considered as a coordinate of the moduli space of elliptic curves, the variable z is the complex coordinate of a fixed elliptic curve.

Definition 2.5 (Feynman graphs and integrals). A *Feynman graph* Γ of genus g is a trivalent connected graph of genus g . For a Feynman graph, we throughout fix a reference labeling x_1, \dots, x_{2g-2} of the $2g - 2$ trivalent vertices and a reference labeling q_1, \dots, q_{3g-3} of the edges of Γ .

For an edge q_k of Γ connecting the vertices x_i and x_j , we define a function

$$P_k := P(z_i - z_j, q),$$

where P denotes the propagator of Definition 2.4 (the choice of sign i.e., $z_i - z_j$ or $z_j - z_i$ plays no role, more about this in Section 2.4). Pick a total ordering Ω of the vertices and starting points of the form iy_1, \dots, iy_{2g-2} in the complex plane, where the y_j are pairwise different small numbers. We define integration paths $\gamma_1, \dots, \gamma_{2g-2}$ by

$$\gamma_j : [0, 1] \rightarrow \mathbb{C} : t \mapsto iy_j + t,$$

such that the order of the real coordinates y_j of the starting points of the paths equals Ω . We then define the integral

$$I_{\Gamma, \Omega}(q) := \int_{z_j \in \gamma_j} \prod_{k=1}^{3g-3} (-P_k). \quad (2.1)$$

Finally, we define

$$I_{\Gamma}(q) = \sum_{\Omega} I_{\Gamma, \Omega}(q),$$

where the sum runs over all $(2g-2)!$ orders of the vertices.

The following is the precise statement of the top arrow in the triangle in the introduction (see Theorem 3 of [9]):

Theorem 2.6 (Mirror Symmetry for elliptic curves). *Let $g > 1$. For the definition of the invariants, see 2.1 and 2.5. We have*

$$F_g(q) = \sum_{d=1}^{\infty} N_{d,g} q^{2d} = \sum_{\Gamma} I_{\Gamma}(q) \cdot \frac{1}{|\text{Aut}(\Gamma)|},$$

where $\text{Aut}(\Gamma)$ denotes the automorphism group of Γ and the sum goes over all trivalent graphs Γ of genus g .

2.2. Tropical covers and Hurwitz numbers. We give a proof of Theorem 2.6 by a detour to tropical geometry and tropical mirror symmetry. We first relate Hurwitz numbers to tropical Hurwitz numbers.

Definition 2.7 (Tropical curves). A (generic) *tropical curve* C (without ends) is a connected, finite, trivalent, metric graph. Its *genus* is given by its first Betti number. The *combinatorial type* of a curve is its homeomorphism class, i.e., the underlying graph without lengths on the edges.

A tropical elliptic curve consists of one edge forming a circle of certain length. We will fix a tropical elliptic curve E (e.g. one having length 1). Moreover, to fix notation, in the following we denote by C a tropical curve of genus g and combinatorial type Γ .

Definition 2.8 (Tropical covers). A map $\pi : C \rightarrow E$ is a *tropical cover* of E if it is continuous, non-constant, integer affine on each edge and respects the *balancing condition* at every vertex $P \in C$:

For an edge e of C denote by w_e the *weight* of e , i.e., the absolute value of the slope of $\pi|_e$. Consider a (small) open neighbourhood U of $p = \pi(P)$, then U combinatorially consists of p together with two rays r_1 and r_2 , left and right of p . Let V be the connected component of $\pi^{-1}(U)$ which contains P . Then V consists of P adjacent to three rays). Then π is balanced at P if

$$\sum_{R \text{ maps to } r_1} w_R = \sum_{R \text{ maps to } r_2} w_R,$$

where R goes over the three rays adjacent to P and rays inherit their weights from the corresponding edges.

The *degree* of a cover is the weighted number of preimages of a generic point: For all $p \in E$ not having any vertex of C as preimage we have

$$d = \sum_{P \in C: \pi(P)=p} w_{e_P},$$

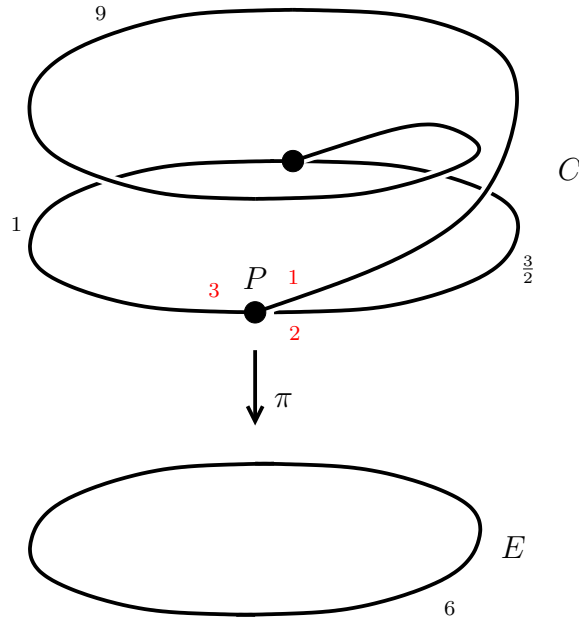


FIGURE 1. A tropical cover of degree 4 with genus 2 source curve.

where e_P is the edge of C containing P . The images of the vertices of C are called the *branch points* of π .

Example 2.9. Figure 1 shows a tropical cover of degree 4 with a genus 2 source curve. The red numbers close to the vertex P are the weights of the corresponding edges, the black numbers denote the lengths. The cover is balanced at P since there is an edge of weight 3 leaving in one direction and an edge of weight 2 plus an edge of weight 1 leaving in the opposite direction.

We can see that the length of an edge of C is determined by its weight and the length of its image. We will therefore in the following not specify edge lengths anymore.

Definition 2.10 (Isomorphisms of curves and covers). An *isomorphism of tropical curves* is an isometry of metric graphs. Two covers $\pi : C \rightarrow E$ and $\pi' : C' \rightarrow E$ are isomorphic if there is an isomorphism of curves $\phi : C \rightarrow C'$ such that $\pi' \circ \phi = \pi$.

As usual when counting tropical objects we have to weight them with a certain multiplicity.

Definition 2.11 (Multiplicities). The multiplicity of a cover $\pi : C \rightarrow E$ is defined to be

$$\text{mult}(\pi) := \frac{1}{|\text{Aut}(\pi)|} \prod_e w_e,$$

where the product goes over all edges e of C and $\text{Aut}(\pi)$ is the automorphism group of π .

Definition 2.12 (Tropical Hurwitz numbers). Fix branch points p_1, \dots, p_{2g-2} in the tropical, elliptic curve E . The *tropical Hurwitz number* $N_{d,g}^{\text{trop}}$ is the weighted number of isomorphism classes of degree d covers $\pi : C \rightarrow E$ having their branch points at

the p_i , where C is a curve of genus g :

$$N_{d,g}^{\text{trop}} := \sum_{\pi: C \rightarrow E} \text{mult}(\pi).$$

The following is the precise formulation of the left arrow of the triangle in the introduction:

Theorem 2.13 (Correspondence Theorem). *The algebraic and tropical Hurwitz numbers of simply ramified covers of an elliptic curve coincide (see Definition 2.1 and 2.12), i.e., we have*

$$N_{d,g}^{\text{trop}} = N_{d,g}.$$

This theorem could be proved by a mild generalization of the Correspondence Theorem for Hurwitz numbers in [4]. For the sake of completeness, we give our own proof, using more combinatorial methods involving the symmetric group. We present it in the Appendix 4.1.

Using the Correspondence Theorem 2.13, it is obviously sufficient to prove the following theorem in order to obtain a tropical proof of Theorem 2.6. This theorem can be viewed as the right arrow in the triangle in the introduction.

Theorem 2.14 (Tropical curves and integrals). *Let $g > 1$. For the definition of the invariants, see Definitions 2.12 and 2.5. We have*

$$\sum_{d=1}^{\infty} N_{d,g}^{\text{trop}} q^{2d} = \sum_{\Gamma} I_{\Gamma}(q) \cdot \frac{1}{|\text{Aut}(\Gamma)|},$$

where the sum goes over all trivalent graphs Γ of genus g .

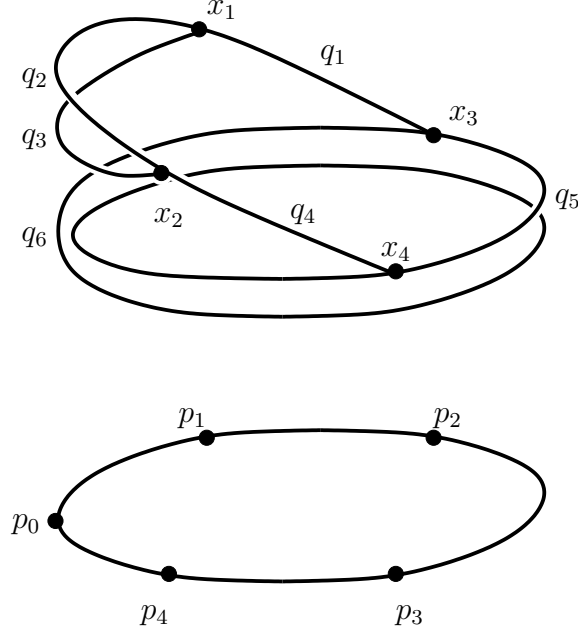
2.3. Labeled tropical covers. To deduce Theorem 2.14, we prove a more general statement that implies this theorem, namely our Tropical Mirror Symmetry Theorem for elliptic curves 2.20. To state the result, we need to introduce labeled tropical covers, and a refined version of the Feynman integrals from above. This more general tropical mirror symmetry theorem is more natural on the tropical side, since the combinatorics involved in the hunt of monomials contributing to the refined Feynman integrals resp. in counting labeled tropical covers can be related very naturally.

Definition 2.15 (Labeled tropical covers). Let $\pi : C \rightarrow E$ be a tropical cover as in Definition 2.8. Let Γ be the combinatorial type of the tropical curve C . We fix a reference labeling x_1, \dots, x_{2g-2} of the vertices and a reference labeling q_1, \dots, q_{3g-3} of the edges of Γ , as in Definition 2.5 for Feynman graphs. We then consider the *labeled tropical cover* $\hat{\pi} : C \rightarrow E$, where the source curve C is in addition equipped with the labeling. The important difference between tropical covers and labeled tropical covers is the definition of isomorphism: for a labeled tropical cover, we require an isomorphism to respect the labels. As usual, we consider labeled tropical covers only up to isomorphism.

The combinatorial type of a labeled tropical cover is the combinatorial type of the source curve together with the labels, i.e., a Feynman graph.

Example 2.16. Figure 2 shows a labeled cover of degree 4. The edges labeled q_2, q_3 and q_6 are supposed to have weight 1, edge q_1 and q_4 weight 2 and q_5 weight 3. The underlying Feynman graph is the one of Figure 3.

The definition of the generating series $F_g(q)$ for Hurwitz numbers has to be refined accordingly:

FIGURE 2. A labeled tropical cover of E .

Definition 2.17. We fix once and for all a base point p_0 in E . For a tuple $\underline{a} = (a_1, \dots, a_{3g-3})$, we define $N_{\underline{a}, g}^{\text{trop}}$ to be the weighted number of labeled tropical covers $\hat{\pi} : C \rightarrow E$ of degree $\sum_{i=1}^{3g-3} a_i$, where C has genus g , having their branch points at the prescribed positions and satisfying

$$\#(\hat{\pi}^{-1}(p_0) \cap q_i) \cdot w_i = a_i$$

for all $i = 1, \dots, 3g - 3$. Each labeled tropical cover is counted with multiplicity $\prod_{i=1}^{3g-3} w_i$. Here, w_i denotes the weight of the edge q_i . We call \underline{a} the *branch type* of the tropical cover at p_0 .

We also define for a Feynman graph Γ the number $N_{\underline{a}, \Gamma}^{\text{trop}}$ to be the weighted number of labeled tropical covers as above with source curve of type Γ .

We set

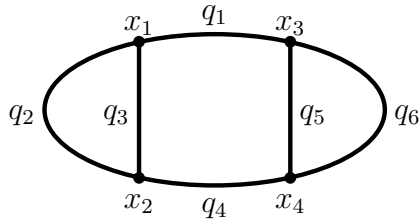
$$F_g(q_1, \dots, q_{3g-3}) = \sum_{\underline{a}} N_{\underline{a}, g}^{\text{trop}} q^{2 \cdot \underline{a}}.$$

Here, the sum goes over all $\underline{a} \in \mathbb{N}^{3g-3}$ and $q^{2 \cdot \underline{a}}$ denotes the multi-index power $q^{2 \cdot \underline{a}} = q_1^{2a_1} \cdots q_{3g-3}^{2a_{3g-3}}$.

Example 2.18. Choose for example $g = 3$ and $\underline{a} = (0, 2, 1, 0, 0, 1)$. Let Γ be the Feynman graph depicted in Figure 3. Then $N_{\underline{a}, \Gamma}^{\text{trop}} = 256$. All labeled covers contributing to $N_{\underline{a}, \Gamma}^{\text{trop}}$ together with their multiplicities are depicted in Figure 4. The number next to each label q_i stands for the weight of the labeled edge. The white dots are the points in the fiber of p_0 under π .

Similarly, we refine the definition of the integrals of Definition 2.5:

Definition 2.19. Let Γ be a Feynman graph. As usual, the vertices are labeled with x_i and the edges with q_i . For the edge q_k of Γ connecting the vertices x_i and x_j , we

FIGURE 3. The Feynman graph Γ .

change the definition of the integrand to

$$P_k := P(z_i - z_j, q_k),$$

where P denotes the propagator of Definition 2.4. For a total ordering Ω of the vertices we then define the integral

$$I_{\Gamma, \Omega}(q_1, \dots, q_{3g-3}) := \int_{z_j \in \gamma_j} \prod_1^{3g-3} (-P_k)$$

just as in Definition 2.5.

We also set

$$I_{\Gamma}(q_1, \dots, q_{3g-3}) = \sum_{\Omega} I_{\Gamma, \Omega}(q_1, \dots, q_{3g-3}),$$

where the sum goes over all $(2g - 2)!$ orders of the vertices.

We can now present the main result of our paper, the tropical mirror symmetry theorem for elliptic curves in its refined version:

Theorem 2.20 (Tropical Mirror Symmetry for elliptic curves). *Let $g > 1$. For the definition of the invariants, see Definitions 2.15 and 2.19. We have*

$$F_g(q_1, \dots, q_{3g-3}) = \sum_{\underline{a}} N_{\underline{a}, g}^{\text{trop}} q^{2 \cdot \underline{a}} = \sum_{\Gamma} I_{\Gamma}(q_1, \dots, q_{3g-3}).$$

More precisely, the coefficient of the monomial $q^{2 \cdot \underline{a}}$ in $I_{\Gamma}(q_1, \dots, q_{3g-3})$ equals $N_{\underline{a}, \Gamma}^{\text{trop}}$.

The proof of Theorem 2.20 follows immediately from Theorem 2.30.

Note that the Tropical Mirror Symmetry Theorem naturally gives an interpretation of the Hurwitz number generating function $F_g(q_1, \dots, q_{3g-3})$ in terms of a sum over Feynman graphs — we can write it as

$$F_g(q_1, \dots, q_{3g-3}) = \sum_{\Gamma} \left(\sum_{\underline{a}} N_{\underline{a}, \Gamma}^{\text{trop}} q^{2 \cdot \underline{a}} \right),$$

and Theorem 2.20 implies that the equality to the Feynman integral holds on the level of the summands for each graph. The same is true of course after setting $q_k = q$ for all k , thus going back to (unlabeled) tropical covers and (unrefined) Feynman integrals. This is particularly interesting since all statements that hold on the level of graphs (such as the quasimodularity shown in Section 3) now become meaningful on the A-model side (i.e., for the generating function of Hurwitz numbers.)

We now show how one can deduce Theorem 2.14 from this more refined version:

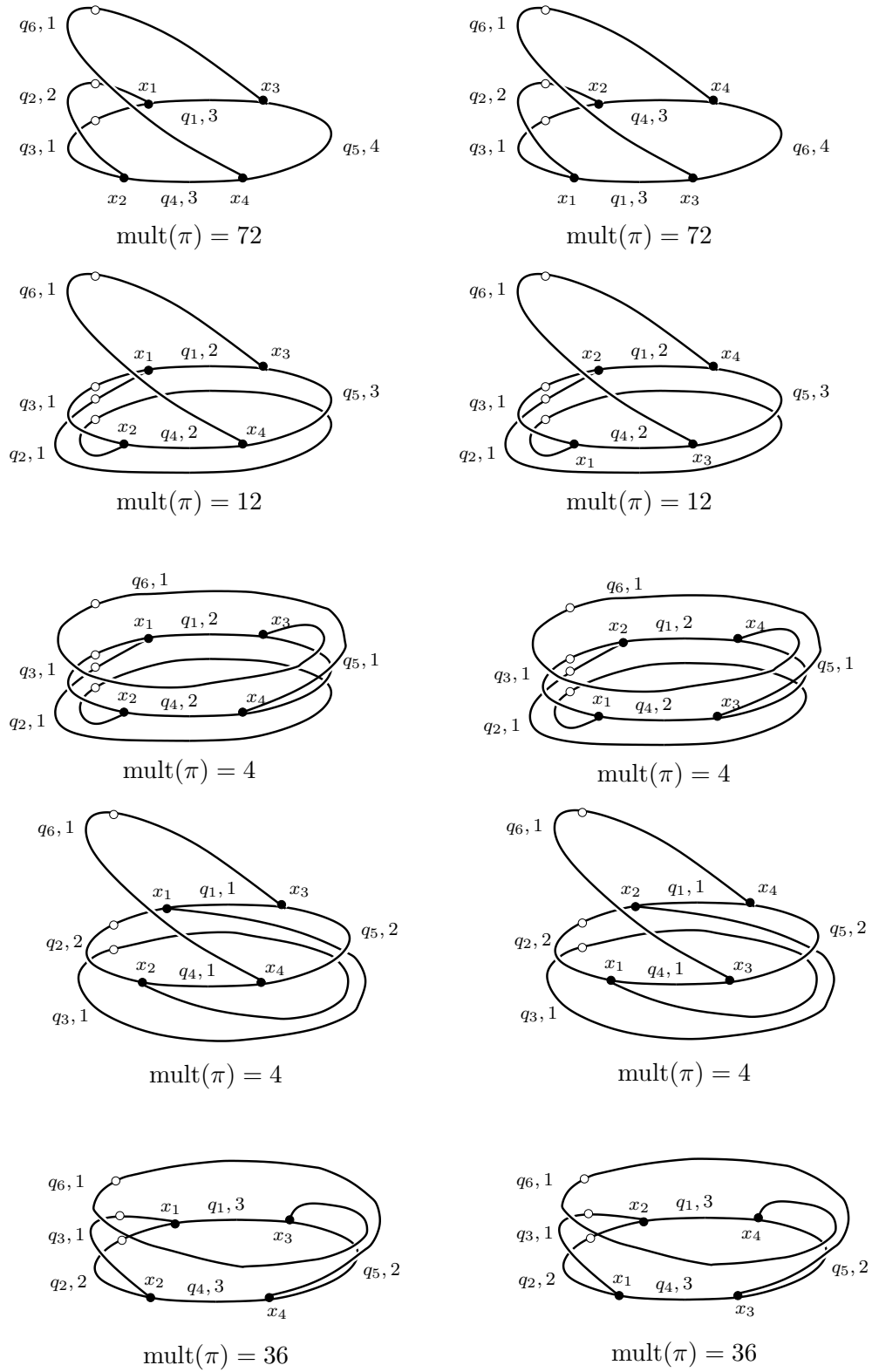


FIGURE 4. All labeled tropical covers contributing to $N_{(0,2,1,0,0,1),\Gamma}^{\text{trop}} = 256$.

Proof of Theorem 2.14 using Theorem 2.20. For a fixed graph Γ , let $N_{d,\Gamma}^{\text{trop}}$ be the number of (unlabeled) tropical covers of degree d as in Definition 2.12, where the combinatorial type of the source curve is Γ . As in Definition 2.11, each cover $\pi : C \rightarrow E$ is counted with multiplicity $\frac{1}{|\text{Aut}(\pi)|} \prod_e w_e$, where the product goes over all edges e of Γ and w_e denotes the weight of the edge e . As usual for Feynman graphs, we fix a reference labeling x_i of the vertices and q_i of the edges (see Definition 2.5). There exists a forgetful map ft from the set of labeled tropical covers satisfying the ramification conditions to the set of unlabeled covers by just forgetting the labels. We would like to study the cardinality of the fibers of ft . Let $\pi : C \rightarrow E$ be an (unlabeled) cover such that the combinatorial type of C is Γ . The automorphism group of Γ , $\text{Aut}(\Gamma)$, acts transitively on the fiber $\text{ft}^{-1}(\pi)$ in the obvious way. So, to determine the cardinality of the set $\text{ft}^{-1}(\pi)$, we think of it as the orbit under this action and obtain $|\text{ft}^{-1}(\pi)| = \frac{|\text{Aut}(\Gamma)|}{|\text{Aut}(\pi)|}$, since the stabilizer of the action equals the set of automorphisms of π . Each labeled cover in the set $\text{ft}^{-1}(\pi)$ is counted with the same multiplicity $\prod_e w_e$, where the product goes over all edges e in Γ .

Thus we obtain

$$\begin{aligned} \sum_{\underline{a} \mid \sum a_i = d} N_{\underline{a},\Gamma}^{\text{trop}} &= \sum_{\hat{\pi}: C \rightarrow E} \prod_e w_e = \sum_{\pi: C \rightarrow E} \sum_{\hat{\pi}: C \rightarrow E \mid \text{ft}(\hat{\pi}) = \pi} \prod_e w_e \\ &= \sum_{\pi: C \rightarrow E} \frac{|\text{Aut}(\Gamma)|}{|\text{Aut}(\pi)|} \prod_e w_e = |\text{Aut}(\Gamma)| \cdot N_{d,\Gamma}^{\text{trop}}, \end{aligned}$$

where the second sum goes over all labeled covers $\hat{\pi} : C \rightarrow E$ of degree d and genus g satisfying the conditions and such that the combinatorial type of C is Γ , the third sum goes analogously over all (unlabeled) covers $\pi : C \rightarrow E$ and over the labeled covers in the fiber of the forgetful map, the third equality holds true because of the orbit argument we just gave and the last equality since an (unlabeled) cover is counted with multiplicity $\frac{1}{|\text{Aut}(\pi)|} \prod_e w_e$.

We conclude

$$\begin{aligned} \sum_d N_{d,g}^{\text{trop}} q^{2d} &= \sum_d \sum_{\Gamma} N_{d,\Gamma}^{\text{trop}} q^{2d} = \sum_d \sum_{\Gamma} \frac{1}{|\text{Aut}(\Gamma)|} \sum_{\underline{a} \mid \sum a_i = d} N_{\underline{a},\Gamma}^{\text{trop}} q^{2d} \\ &= \sum_{\Gamma} \frac{1}{|\text{Aut}(\Gamma)|} \sum_d \sum_{\underline{a} \mid \sum a_i = d} N_{\underline{a},\Gamma}^{\text{trop}} q^{2d}. \end{aligned}$$

Now we can replace $N_{\underline{a},\Gamma}^{\text{trop}}$ by the coefficient of $q^{2 \cdot \underline{a}}$ in $I_{\Gamma}(q_1, \dots, q_{3g-3})$ by Theorem 2.20. If we insert $q_k = q$ for all $k = 1, \dots, 3g-3$ in $I_{\Gamma}(q_1, \dots, q_{3g-3})$ we can conclude that the coefficient of q^{2d} in $I_{\Gamma}(q)$ equals $\sum_{\underline{a} \mid \sum a_i = d} N_{\underline{a},\Gamma}^{\text{trop}}$. Thus the above expression equals

$$\sum_{\Gamma} \frac{1}{|\text{Aut}(\Gamma)|} I_{\Gamma}(q),$$

and Theorem 2.14 is proved. \square

Remark 2.21. From a computational point of view, it makes sense to introduce a base point to the computations above. In terms of labeled tropical covers, we then count covers as above which satisfy in addition the requirement that a fixed vertex, say e.g.

x_1 , is mapped to a fixed base point p . In terms of integrals, we set the variable $z_1 = 0$. The analogous statement to Theorem 2.20 relating numbers of labeled tropical covers sending x_1 to p to coefficients of integrals where we set $z_1 = 0$ holds true and can be proved along the same lines as the proof of Theorem 2.20 presented here.

2.4. The propagator. In this subsection, we study the combinatorics of Feynman integrals. We show that the computation of a Feynman integral can be boiled down to a combinatorial hunt of monomials in a big generating function. We also express the integrals in terms of a constant coefficient of a multi-variate series, an expression that will become important in Section 3 proving the quasimodularity of Feynman integrals. In order to compute the integrals of Definition 2.19, it is helpful to make a change of variables $x_j = e^{i\pi z_j}$ for each $j = 1, \dots, 2g - 2$. Under this change of variables, each integration path γ_j goes to (half) a circle around the origin. The integral is then nothing else but the computation of residues. We start by giving a nicer expression of the propagator after the change of variables:

Theorem 2.22 (The propagator). *The propagator $P(x, q)$ of Definition 2.4 with $x = e^{i\pi z}$ equals*

$$P(x, q) = -\frac{x^2}{(x^2 - 1)^2} - \sum_{n=1}^{\infty} \left(\sum_{d|n} d (x^{2d} + x^{-2d}) \right) q^{2n}. \quad (2.2)$$

Proof. The claim of the theorem follows by comparing Taylor coefficients of both sides. To be more precise (see [20])

$$\wp(z, q) = z^{-2} + \sum_{k=2}^{\infty} (2k - 1) G_{2k}(q) z^{2k-2},$$

where $G_{2k}(q)$ is the classical weight $2k$ Eisenstein series, normalized to have a Fourier expansion of the shape

$$G_{2k}(q) = 2\zeta(2k) + \frac{2(2\pi i)^{2k}}{(2k - 1)!} \sum_{n=1}^{\infty} \sigma_{2k-1}(n) q^{2n},$$

where $\zeta(s)$ denotes the Riemann zeta function and $\sigma_{\ell}(n) := \sum_{d|n} d^{\ell}$ is the ℓ th divisor sum. Note that at even integers the ζ -function may be written in terms of Bernoulli numbers, defined via its generating functions

$$\frac{t}{e^t - 1} = \sum_{m=0}^{\infty} \frac{B_m}{m!} t^m. \quad (2.3)$$

To be more precise, we have

$$\zeta(2k) = (-1)^{k+1} \frac{(2\pi)^{2k}}{2(2k)!} B_{2k}.$$

We next determine the Taylor expansion of the right-hand side of (2.2). Differentiating (2.3) gives that

$$-\frac{e^{2\pi iz}}{(e^{2\pi iz} - 1)^2} = \frac{1}{(2\pi z)^2} + \sum_{m=0}^{\infty} \frac{m-1}{m!} B_m (2\pi iz)^{m-2}.$$

Moreover, in the second term we use the series expansion of the exponential function to obtain

$$\begin{aligned}
-\sum_{n=1}^{\infty} \sum_{d|n} d \left(x^{2d} + x^{-2d} \right) q^{2n} &= -\sum_{n=1}^{\infty} \sum_{d|n} d \sum_{\ell=0}^{\infty} \left(1 + (-1)^{\ell} \right) \frac{(2\pi idz)^{\ell}}{\ell!} q^{2n} \\
&= -2 \sum_{n=1}^{\infty} \sum_{d|n} d \sum_{\ell=0}^{\infty} \frac{(2\pi idz)^{2\ell}}{(2\ell)!} q^{2n} \\
&= -2 \sum_{n=1}^{\infty} \sum_{\ell=0}^{\infty} \frac{(2\pi idz)^{2\ell}}{(2\ell)!} \sum_{d|n} d^{2\ell+1} q^{2n} \\
&= -2 \sum_{n=1}^{\infty} \left(\sum_{\ell=0}^{\infty} \frac{(2\pi idz)^{2\ell}}{(2\ell)!} \sigma_{2\ell+1}(n) \right) q^{2n}.
\end{aligned}$$

Now the claim follows by comparing coefficients of $z^{2\ell}$. □

Now let us go back to a fixed Feynman graph Γ and consider the function we have to integrate. Denote the vertices of the edge q_k of Γ by x_{k_1} and x_{k_2} . Since the derivative of $\ln(x_i)$ is $\frac{1}{x_i}$, after the coordinate change we integrate the function

$$P_{\Gamma} := \prod_{k=1}^{3g-3} \left(-P \left(\frac{x_{k_1}}{x_{k_2}}, q_k \right) \right) \cdot \frac{1}{i\pi x_1 \cdots i\pi x_{2g-2}}.$$

After the coordinate change, the integration paths are half-circles around the origin. Since our function is symmetric (there are only even powers of x), we can compute this integral as $\frac{1}{2}$ times the integral of the same function along a whole circle. Since the function has only one pole at zero (within the range of integration), we can compute the integral along the whole circle as $2i\pi$ times the residue at zero by the Residue Theorem.

It follows that the integral equals the constant coefficient of

$$P'_{\Gamma} := \prod_{k=1}^{3g-3} \left(-P \left(\frac{x_{k_1}}{x_{k_2}}, q_k \right) \right). \quad (2.4)$$

Note that it follows from Theorem 2.22 that $-P\left(\frac{x}{y}, q\right) = -P\left(\frac{y}{x}, q\right)$. This is obvious for the (Laurent-polynomial) coefficients of q^d with $d > 0$. For the constant coefficient, it follows since

$$\frac{\left(\frac{x}{y}\right)^2}{\left(\left(\frac{x}{y}\right)^2 - 1\right)^2} = \frac{x^2 y^2}{(x^2 - y^2)^2} = \frac{x^2 y^2}{(y^2 - x^2)^2} = \frac{\left(\frac{y}{x}\right)^2}{\left(\left(\frac{y}{x}\right)^2 - 1\right)^2}. \quad (2.5)$$

Therefore it is not important which vertex of q_k we call x_{k_1} and which x_{k_2} (this also explains the independence of the sign $z_i - z_j$ resp. $z_j - z_i$ in Definition 2.5). To compute the (in the x_k) constant coefficient of P'_{Γ} , we have to express the (in q_k)

constant coefficient of each factor,

$$\frac{\left(\frac{x_{k_1}}{x_{k_2}}\right)^2}{\left(\left(\frac{x_{k_1}}{x_{k_2}}\right)^2 - 1\right)^2},$$

as a series. Depending on whether $\left|\frac{x_{k_1}}{x_{k_2}}\right| < 1$ or $\left|\frac{x_{k_2}}{x_{k_1}}\right| < 1$, we can use the left or the right expression of Equation (2.5) for the constant coefficient and expand the denominator as product of geometric series. The following lemma shows how to expand the constant coefficient as a series, depending on the absolute value of the ratio of the two involved variables. This explains why different orders Ω can produce different integrals $I_{\Gamma,\Omega}(q_1, \dots, q_{3g-3})$: the position of the integration paths determine the series expansion of the constant coefficients.

Lemma 2.23. *Assume $|x| < 1$. Then*

$$\frac{x^2}{(x^2 - 1)^2} = \sum_{w=1}^{\infty} w \cdot x^{2w}.$$

The proof follows easily after expanding the factors as geometric series.

The discussion of this subsection can be summed up as follows:

Lemma 2.24. *Fix a Feynman graph Γ and an order Ω as in Definition 2.5, and a tuple (a_1, \dots, a_{3g-3}) as in Definition 2.17. We express the coefficient of q^{2-a} in $I_{\Gamma,\Omega}(q_1, \dots, q_{3g-3})$ of Definition 2.19. Assume k is such that the entry $a_k = 0$, and assume the edge q_k connects the two vertices x_{k_1} and x_{k_2} . Choose the notation of the two vertices x_{k_1} and x_{k_2} such that the chosen order Ω implies $\left|\frac{x_{k_1}}{x_{k_2}}\right| < 1$ for the starting points on the integration paths. Then the coefficient of q^{2-a} in $I_{\Gamma,\Omega}(q_1, \dots, q_{3g-3})$ equals the constant term of the series*

$$\prod_{k|a_k=0} \left(\sum_{w_k=1}^{\infty} w_k \cdot \left(\frac{x_{k_1}}{x_{k_2}}\right)^{2w_k} \right) \cdot \prod_{k|a_k \neq 0} \left(\sum_{w_k|a_k} w_k \left(\left(\frac{x_{k_1}}{x_{k_2}}\right)^{2w_k} + \left(\frac{x_{k_2}}{x_{k_1}}\right)^{2w_k} \right) \right). \quad (2.6)$$

The discussion above will also be important in Section 3 for proving the quasimodularity of Feynman integrals. We sum it up in a way suitable for this purpose. We insert $q_k = q$ for each k coming back to the integrals of Definition 2.5. For a Taylor series

$$F(x_1, \dots, x_n) = \sum_{\substack{1 \leq j \leq n \\ \alpha_j \geq 0}} \alpha(a_1, \dots, a_n) x_1^{a_1} \cdots x_n^{a_n}$$

we denote

$$\text{coeff}_{[x_1^{a_1}, \dots, x_n^{a_n}]}(F) = \alpha(a_1, \dots, a_n).$$

Moreover, for a fixed Feynman graph Γ and an order Ω as in Definition 2.5, let

$$P_{\Gamma,\Omega} := \prod_{k=1}^{3g-3} \left(-P \left(\frac{x_{k_1}}{x_{k_2}}, q \right) \right),$$

where P as usual denotes the propagator of Definition 2.4 resp. Theorem 2.22.

Lemma 2.25. For Γ and Ω as in Definition 2.5, we have

$$I_{\Gamma, \Omega}(q) = \text{coeff}_{[x_1^0, \dots, x_{2g-2}^0]}(P_{\Gamma, \Omega}).$$

The claim follows immediatly from Equation (2.4).

2.5. The bijection. For a fixed Feynman graph Γ and tuple (a_1, \dots, a_{3g-3}) , we are now ready to directly relate nonzero contributions to the constant term of the series given in (2.6) for each order Ω to tropical covers contributing to $N_{\underline{a}, \Gamma}^{\text{trop}}$, thus proving Theorem 2.20.

We express the constant term as a sum over products containing one term of each factor of the series in (2.6):

Definition 2.26. Fix Γ , Ω and (a_1, \dots, a_{3g-3}) as in Definition 2.5 resp. 2.17. Consider a tuple of powers a_k and terms of the series in (2.6)

$$\left((a_k, T_k) \right)_{k=1, \dots, 3g-3} = \left(\left(a_k, w_k \cdot \left(\frac{x_{k_i}}{x_{k_j}} \right)^{2w_k} \right) \right)_{k=1, \dots, 3g-3},$$

where $i = 1$ and $j = 2$ if $a_k = 0$, and $\{i, j\} = \{1, 2\}$ otherwise. We require the product of the terms, $\prod_{k=1}^{3g-3} T_k$, to be constant in each x_i , $i = 1, \dots, 2g - 2$.

We denote the set of all such tuples by $\mathcal{T}_{\underline{a}, \Gamma, \Omega}$.

Obviously, each tuple yields a summand of the constant term of the series in (2.6) (and thus, by Lemma 2.24, a contribution to the $q^{2 \cdot \underline{a}}$ -coefficient of $I_{\Gamma, \Omega}(q_1, \dots, q_{3g-3})$), and vice versa, each summand arises from a tuple in $\mathcal{T}_{\underline{a}, \Gamma, \Omega}$. Note that the contribution of a tuple equals

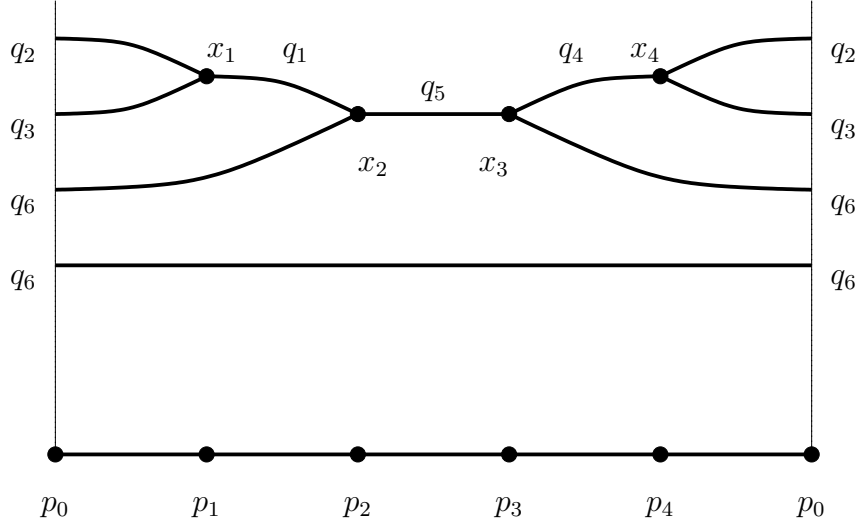
$$\prod_{k=1}^{3g-3} T_k = \prod_{k=1}^{3g-3} w_k. \quad (2.7)$$

Definition 2.27. Let $\hat{\pi} : C \rightarrow E$ be a labeled tropical cover as in Definition 2.15 contributing to $N_{\underline{a}, \Gamma}^{\text{trop}}$. We cut E at the base point p_0 and flatten it to an interval following clockwise orientation. We define an order of the vertices x_i of C given by the natural order of their image points on the interval. For a given order Ω as in Definition 2.5, we let $N_{\underline{a}, \Gamma, \Omega}^{\text{trop}}$ be the weighted number of labeled tropical covers as in 2.15 (i.e., of degree $\sum_{i=1}^{3g-3} a_i$, where the source curve has combinatorial type Γ , having their branch points at the prescribed positions and satisfying $\#(\hat{\pi}^{-1}(p_0) \cap q_i) \cdot w_i = a_i$ for all $i = 1, \dots, 3g-3$, where w_i denotes the weight of the edge q_i), and in addition satisfying that the above order equals Ω . As usual, each cover is counted with multiplicity $\prod_{k=1}^{3g-3} w_k$.

Note that obviously we have $\sum_{\Omega} N_{\underline{a}, \Gamma, \Omega}^{\text{trop}} = N_{\underline{a}, \Gamma}^{\text{trop}}$, where the sum goes over all $(2g - 2)!$ orders Ω of the vertices.

Example 2.28. The cover in Figure 2 cut at p_0 and flattened to an interval is depicted in Figure 5. Its vertex ordering Ω is given by $x_1 < x_2 < x_3 < x_4$.

Example 2.29. Go back to Example 2.18 where we determined $N_{\underline{a}, \Gamma}^{\text{trop}}$ for the Feynman graph Γ in Figure 3 and $\underline{a} = (0, 2, 1, 0, 0, 1)$. Note that there are two orders Ω that yield nonzero contributions, namely $x_1 < x_3 < x_4 < x_2$ (call it Ω_1) and $x_2 < x_4 < x_3 < x_1$ (call it Ω_2). In Figure 4, the covers with order Ω_1 appear in the left column, the covers with Ω_2 in the right column. For both orders, we have $N_{\underline{a}, \Gamma, \Omega_i}^{\text{trop}} = 128$, $i = 1, 2$. Altogether, we have $N_{\underline{a}, \Gamma}^{\text{trop}} = N_{\underline{a}, \Gamma, \Omega_1}^{\text{trop}} + N_{\underline{a}, \Gamma, \Omega_2}^{\text{trop}} = 128 + 128 = 256$.

FIGURE 5. The cover of Figure 2 cut at p_0 .

Theorem 2.30. Fix a Feynman graph Γ , an order Ω and a tuple (a_1, \dots, a_{3g-3}) as in Definition 2.5 resp. 2.17.

There is a bijection between the set of labeled tropical covers contributing to $N_{\underline{a}, \Gamma, \Omega}^{\text{trop}}$ and the set $\mathcal{T}_{\underline{a}, \Gamma, \Omega}$ of tuples contributing to the $q^{2 \cdot \underline{a}}$ -coefficient of $I_{\Gamma, \Omega}(q_1, \dots, q_{3g-3})$ (see Definition 2.27 and 2.26).

The bijection identifies the coefficients w_k of the terms T_k of a tuple with the weights of the edges of the corresponding labeled tropical cover. In particular, the contribution of a tuple to the coefficient of $q^{2 \cdot \underline{a}}$ in $I_{\Gamma, \Omega}(q_1, \dots, q_{3g-3})$ equals the multiplicity of the corresponding labeled tropical cover, with which it contributes to $N_{\underline{a}, \Gamma, \Omega}^{\text{trop}}$.

Note that it follows immediately from Theorem 2.30 that $N_{\underline{a}, \Gamma, \Omega}^{\text{trop}}$ equals the coefficient of $q^{2 \cdot \underline{a}}$ in $I_{\Gamma, \Omega}(q_1, \dots, q_{3g-3})$, hence the coefficient of $q^{2 \cdot \underline{a}}$ in $I_{\Gamma}(q_1, \dots, q_{3g-3})$ equals $N_{\underline{a}, \Gamma}^{\text{trop}}$ and Theorem 2.20 is proved.

To prove Theorem 2.30, we set up the map sending a tuple in $\mathcal{T}_{\underline{a}, \Gamma, \Omega}$ to a tropical cover in Construction 2.31. The theorem then follows from Lemma 2.33 stating that this construction indeed yields a map as required and Lemma 2.34 stating that it has a natural inverse and therefore is a bijection.

As usual, let Γ , Ω and \underline{a} be fixed as in Definition 2.5 resp. 2.17.

Construction 2.31. Draw an interval from p_0 to p'_0 that can later be glued to E by identifying p_0 and p'_0 , and a rectangular box above in which we can step by step draw a cover of E following the construction (see Figure 6). The vertical sides of the box are called L and L' and represent points which (if they belong to the cover after the construction) are pairwise identified and mapped to the base point.

Given a tuple

$$\left((a_k, T_k) \right)_{k=1, \dots, 3g-3} = \left(\left(a_k, w_k \cdot \left(\frac{x_{k_i}}{x_{k_j}} \right)^{2w_k} \right) \right)_{k=1, \dots, 3g-3}$$

of $\mathcal{T}_{\underline{a}, \Gamma, \Omega}$,

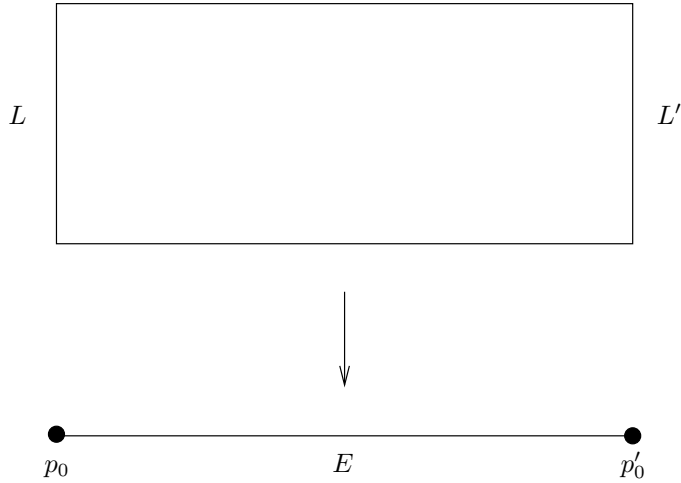


FIGURE 6. Preparation to construct a tropical cover from a tuple.

- draw dots labeled x_1, \dots, x_{3g-3} into the box, from left to right (and slightly downwards, to keep some space to continue the picture), as determined by the order Ω , one dot above each point condition $p_i \in E$ where we fix the branch points;
- for the term $T_k = w_k \cdot \left(\frac{x_{k_i}}{x_{k_j}}\right)^{2w_k}$ draw an edge leaving vertex x_{k_i} to the right and entering vertex x_{k_j} from the left — if $a_k = 0$, let this edge be a straight line connecting these two vertices, if $a_k \neq 0$ let it first leave the box at L' and enter again at L , altogether $\frac{a_k}{w_k}$ times, before it enters x_{k_j} ;
- give the edges drawn in the item before weight w_k . As always, the lengths of the edges are then determined by the differences of the image points of the x_i and the weights.

Glue the corresponding points on L and L' to obtain a cover of E .

Example 2.32. Let Γ be the Feynman graph of Figure 3 and let $\underline{a} = (0, 2, 2, 0, 1, 0)$. Moreover, choose the ordering $x_1 < x_3 < x_4 < x_2$ and pick the terms $T_1 = \left(\frac{x_1}{x_3}\right)^2$, $T_2 = 2 \cdot \left(\frac{x_2}{x_1}\right)^{2 \cdot 2}$, $T_3 = \left(\frac{x_1}{x_2}\right)^2$, $T_4 = \left(\frac{x_4}{x_2}\right)^2$, $T_5 = \left(\frac{x_4}{x_3}\right)^2$ and $T_6 = 2 \cdot \left(\frac{x_3}{x_4}\right)^{2 \cdot 2}$ from the series in (2.6). When applying Construction 2.31 we obtain the picture shown in Figure 7 before gluing.

Lemma 2.33. *Construction 2.31 defines a map from $\mathcal{T}_{\underline{a}, \Gamma, \Omega}$ to the set of tropical covers contributing to $N_{\underline{a}, \Gamma, \Omega}^{\text{trop}}$ (see Definition 2.27 and 2.26).*

Proof. Since the integrand of Definition 2.19 is set up such that we have a term containing a power of $\frac{x_i}{x_j}$ in the tuples in $\mathcal{T}_{\underline{a}, \Gamma, \Omega}$ if and only if there is an edge q_k connecting x_i and x_j , it is clear that we produce a cover whose source curve has combinatorial type equal to the labeled Feynman graph Γ (see also Equation (2.4)). It is also obvious that the vertices are mapped to the interval respecting the order Ω . To see that it is a tropical cover at all, we have to verify the balancing condition at each vertex x_i . This follows from the fact that we require the product of all terms to be constant in x_i : since Γ is trivalent, we have three edges adjacent to x_i , to fix notation call them (without restriction) q_1 , q_2 , and q_3 . Assume (also without

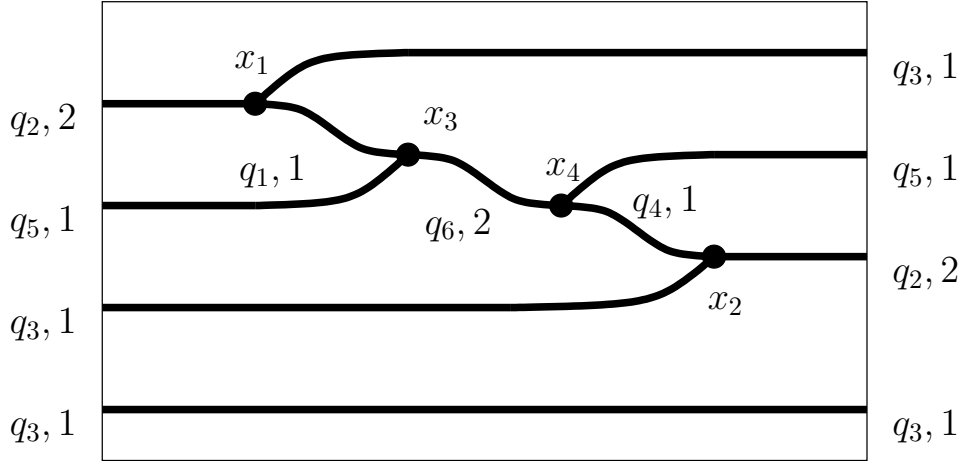


FIGURE 7. Applying Construction 2.31 in Example 2.32.

restriction) that the other vertex of q_j , $j = 1, \dots, 3$ is x_j . The only three terms in the product $\prod_{k=1}^{3g-3} T_k$ involving x_i are then

$$w_1 \cdot \left(\frac{x_1}{x_i}\right)^{2w_1}, w_2 \cdot \left(\frac{x_i}{x_2}\right)^{2w_2}, \text{ and } w_3 \cdot \left(\frac{x_i}{x_3}\right)^{2w_3},$$

where we picked an arbitrary choice between a quotient such as $\frac{x_1}{x_i}$ and its inverse in each term for now. This choice is again made without restriction, just to fix the notation in the terms T_k of the given tuple. (Of course, in general, if some of the $a_j, j = 1, \dots, 3$ are zero, the choice has to respect the order Ω .) In our fixed but arbitrary choice the requirement that the product is constant in x_i translates to the equation

$$-2w_1 + 2w_2 + 2w_3 = 0.$$

The construction implies that here, the edge q_1 enters x_i from the left with weight w_1 while q_2 and q_3 leave the vertex x_i to the right with weight w_2 and w_3 , hence the balancing condition is fulfilled. Since the direction of the edges we draw in the construction reflects the fact that the corresponding two vertices show up in the numerator resp. denominator of the quotient, it is obvious that the instance for which we fixed a notation generalizes to any situation; and the balancing condition at x_i is always equivalent to the requirement that the product is constant in x_i . It is clear from the construction that the labeled tropical cover we have built has its branch points at the required positions. If $a_k = 0$, the construction implies that $\hat{\pi}^{-1}(p_0) \cap q_k = \emptyset$ and thus $\#(\hat{\pi}^{-1}(p_0) \cap q_k) \cdot w_k = 0 = a_k$ as required. If $a_k \neq 0$, we draw $\frac{a_k}{w_k}$ points on L resp. L' that are identified to give $\frac{a_k}{w_k}$ preimages of p_0 in q_k , thus $\#(\hat{\pi}^{-1}(p_0) \cap q_k) \cdot w_k = a_k$ holds in general. In particular, the degree of the cover is $\sum_{k=0}^{3g-3} a_k$.

Obviously, the map identifies the coefficient w_k of a term T_k with the weight of the edge q_k , therefore the contribution of a tuple to the $q^{2 \cdot a}$ -coefficient of the integral $I_{\Gamma, \Omega}(q_1, \dots, q_{3g-3})$ (given by Equation (2.7)) equals the contribution of the corresponding tropical cover to $N_{a, \Gamma, \Omega}^{\text{trop}}$ by Definition 2.27. The statement follows. \square

Lemma 2.34. *The map of Lemma 2.33 has a natural inverse and is a bijection.*

Proof. One can reverse Construction 2.31 in the obvious way. For any edge q_k which does not pass L resp. L' , we set $a_k = 0$. Assume q_k connects the two vertices x_{k_1} and x_{k_2} and assume the order Ω satisfies $x_{k_1} < x_{k_2}$. Then it follows from Definition 2.5 that we have to pick integration paths satisfying $\left| \frac{x_{k_1}}{x_{k_2}} \right| < 1$ and thus using Lemma 2.23 the power series expansion of the corresponding constant term of the propagator (see Theorem 2.22) then contains quotients $\frac{x_{k_1}}{x_{k_2}}$ as required. We pick the term $w_k \cdot \left(\frac{x_{k_1}}{x_{k_2}} \right)^{2w_k}$ for our tuple.

For any edge q_k that passes l_k times with weight w_k through L resp. L' , we set $a_k = w_k \cdot l_k$. Obviously, w_k is a divisor of a_k and thus the term $w_k \cdot \left(\left(\frac{x_{k_1}}{x_{k_2}} \right)^{2w_k} + \left(\frac{x_{k_2}}{x_{k_1}} \right)^{2w_k} \right)$ shows up in the $q_k^{2a_k}$ -coefficient of the propagator as required (see Theorem 2.22) and we can pick the summand corresponding to the orientation of our arrow as term for our tuple.

It is obvious that this inverse construction produces a bijection. \square

Corollary 2.35. *A Feynman graph Γ satisfies $N_{\underline{a}, \Gamma}^{\text{trop}} = 0$ for every \underline{a} , or (by Theorem 2.20) equivalently, $I_{\Gamma}(q_1, \dots, q_{3g-3}) = 0$ if and only if Γ contains a bridge.*

Proof. One can view a tropical cover as a system of rivers flowing into each other without any source or sink, since the weights of the edges are positive and the balancing condition is satisfied. A graph with a bridge must have zero flow on the bridge, and thus cannot be the source of a tropical cover.

Alternatively, to get a nonzero contribution to the coefficient of $q^{2-\underline{a}}$ in the integral $I_{\Gamma}(q_1, \dots, q_{3g-3}) = 0$, we must be given an order Ω and a tuple in $\mathcal{T}_{\underline{a}, \Gamma, \Omega}$. But by Lemma 2.33 such a tuple only exists if the balancing condition is satisfied at every vertex, thus the argument we just gave shows the coefficient is zero for a graph with a bridge.

Vice versa, we have to show that there exists a cover for every graph without a bridge. To see this, we give an algorithm below how to construct for a given bridgeless graph an orientation of the edges that satisfies the following: there is no cut into two connected components Γ_1 and Γ_2 for which all cut edges are oriented from Γ_1 to Γ_2 . It is easy to see that for such an orientation, we can insert positive weights for the edges such that the balancing condition is satisfied at every vertex (we just add enough water to the system of rivers). Thus the statement follows from Construction 2.36 and Lemma 2.37 below. \square

Construction 2.36. Let Γ be a bridgeless graph.

- (1) Choose an arbitrary cycle and orient its edges in one direction. Also choose a reference vertex V on the cycle. Let K denote the set of vertices on the cycle, this is the set of “known vertices” that we will enlarge in the following steps.
- (2) Let U_1, \dots, U_s denote the connected components of the subgraph induced on the vertex set of Γ minus K . If $s \geq 1$, choose an arbitrary vertex $W \in U_1$. Since Γ is connected, there is a path from V to W and we can choose it such that it respects our so far fixed orientations for the edges. At some point, the path must leave the “known part” and enter U_1 , call this edge E_1 . Since E_1 is not a bridge, there must be at least a second edge E_2 connecting the known part to U_1 . We go along E_1 into U_1 until we reach W , and then continue until we hit via E_2 the known part again. We orient the edges we follow on the

way. We add the set of vertices we meet on the way to K and start again at (2).

- (3) At each step described above, we increase the vertex set of the known part. If all vertices are known, we orient the remaining edges arbitrarily.

Lemma 2.37. *Given a bridgeless graph Γ , we can use Construction 2.36 to orient the edges such that the following is satisfied:*

- (1) *Every vertex is contained in an oriented cycle that also contains the reference vertex V .*
- (2) *There is no cut into two connected components Γ_1 and Γ_2 such that all cut edges are oriented from Γ_1 to Γ_2 .*

Proof. The first statement is obvious from the construction: we start with a cycle containing V and add oriented “handles”. For the second statement, assume there was such a cut, and assume without restriction that V is in Γ_1 . Choose an arbitrary vertex W in Γ_2 . By (1), there is an oriented cycle containing W and V . This cycle must contain at least two cut edges which are thus oriented in opposite direction. \square

3. QUASIMODULARITY

In this section, we prove the quasimodularity of the individual Feynman integrals. More precisely, the Mirror Symmetry Theorem 2.6 implies

$$F_g(q) = \sum_d N_{d,g} q^{2d} = \sum_{\Gamma} \frac{1}{|\text{Aut}(\Gamma)|} \left(\sum_{\Omega} I_{\Gamma,\Omega} \right),$$

where the sum runs over all Feynman graphs Γ and orders Ω as in Definition 2.5. It is known that $F_g(q)$ is a quasimodular form [9, 18]. Here, we prove that already the individual summands $I_{\Gamma,\Omega}(q)$ are quasimodular forms. We start by recalling the necessary definitions.

Definition 3.1. A function $f : \mathbb{H} \rightarrow \mathbb{C}$ (where \mathbb{H} denotes the complex upper half plane) is called an *almost holomorphic modular form of weight $k \in \mathbb{Z}$* if $\forall \begin{pmatrix} a & b \\ c & d \end{pmatrix} \in \text{SL}_2(\mathbb{Z})$, we have

$$f\left(\frac{a\tau + b}{c\tau + d}\right) = (c\tau + d)^k f(\tau)$$

and f has the shape $(\tau = u + iv)$

$$f(\tau) = \sum_{j=0}^r \frac{f_j(\tau)}{v^j} \tag{3.1}$$

with f_j holomorphic in $\mathbb{H} \cup \{\infty\}$. The constant term f_0 is called a *quasimodular form* and r is called the *depth* of f . Note that

$$f_0(\tau) = \lim_{\bar{\tau} \rightarrow \infty} f(\tau),$$

if we view τ and $\bar{\tau}$ as independent variables.

The goal is to show the following theorem.

Theorem 3.2. *For all Feynman graphs Γ and orders Ω as in Definition 2.5, the function $I_{\Gamma,\Omega}$ is a quasimodular form of weight $6g - 6$.*

From Lemma 2.25 we know that $I_{\Gamma,\Omega}$ is the constant term of a function whose modular behavior we can easily determine.

Remember that

$$P_{\Gamma,\Omega} := \prod_{k=1}^{3g-3} \left(-P \left(\frac{x_{k_1}}{x_{k_2}}, q \right) \right)$$

where $P(x, q)$ is the propagator (see Definition 2.4 and Theorem 2.22) and the two vertices of an edge q_k of Γ are denoted x_{k_1} and x_{k_2} .

To prove Theorem 3.2, we explicitly construct the associated almost holomorphic modular form. For this, we consider the following slight modification of the propagator of Definition 2.4; we set

$$\widehat{P}(z, \tau) := \frac{1}{4\pi^2} \wp(z, \tau) + \frac{1}{12} E_2(\tau) + \frac{1}{4\pi v},$$

where, as before, $\tau = u + iv$. Obviously

$$\lim_{\bar{\tau} \rightarrow \infty} \widehat{P}(z, \tau) = P(x, q)$$

with $x = e^{2\pi iz}$. Note that in this proof we use a different normalization than in the rest of this paper since this is more natural in the theory of modular forms.

Note that $\widehat{P}(z, \tau)$ and its relation to $P(z, \tau)$ has been used by other authors, see e.g. [21].

Here $\wp(z, \tau) = \wp(x, q)$ and $E_2(\tau) := E_2(q^2)$ by abuse of notation. Moreover, set

$$\widehat{I}_{\Gamma,\Omega}(\tau) := \text{coeff}_{[x_1^0, \dots, x_{2g-2}^0]} \left(\widehat{P}_{\Gamma,\Omega}(z_1, \dots, z_{2g-2}, \tau) \right),$$

where

$$\widehat{P}_{\Gamma,\Omega}(z_1, \dots, z_{2g-2}, \tau) := \prod_{k=1}^{3g-3} \left(-\widehat{P}(z_{k_1} - z_{k_2}, \tau) \right).$$

From Lemma 2.25 we get

$$I_{\Gamma,\Omega} = \lim_{\bar{\tau} \rightarrow \infty} \widehat{I}_{\Gamma,\Omega}(\tau).$$

Theorem 3.2 follows directly from the following

Proposition 3.3. *The function $\widehat{I}_{\Gamma,\Omega}$ is an almost holomorphic modular form of weight $6g - 6$.*

Proof. We start by proving the transformation law. Clearly

$$\widehat{I}_{\Gamma,\Omega}(\tau + 1) = \widehat{I}_{\Gamma,\Omega}(\tau).$$

Thus it is enough to show that

$$\widehat{I}_{\Gamma,\Omega} \left(-\frac{1}{\tau} \right) = \tau^{6g-6} \widehat{I}_{\Gamma,\Omega}(\tau).$$

For this, we use the following transformation laws

$$\begin{aligned} \wp \left(\frac{z}{\tau}, -\frac{1}{\tau} \right) &= \tau^2 \wp(z, \tau), \\ E_2 \left(-\frac{1}{\tau} \right) &= \tau^2 E_2(\tau) + \frac{6\tau}{\pi i}, \\ \text{Im} \left(-\frac{1}{\tau} \right) &= \frac{v}{|\tau|^2}. \end{aligned}$$

They imply

$$\widehat{P}\left(z, -\frac{1}{\tau}\right) = \tau^2 \widehat{P}(z\tau, \tau).$$

From this, we get

$$\begin{aligned} \widehat{P}_{\Gamma, \Omega}\left(z_1, \dots, z_{2g-2}, -\frac{1}{\tau}\right) &= \prod_{k=1}^{3g-3} \tau^2 \left(-\widehat{P}(z_{k_1}\tau - z_{k_2}\tau, \tau)\right) \\ &= \tau^{6g-6} \widehat{P}_{\Gamma, \Omega}(z_1\tau, \dots, z_{2g-2}\tau, \tau). \end{aligned}$$

Thus

$$\widehat{I}_{\Gamma, \Omega}\left(-\frac{1}{\tau}\right) = \tau^{6g-6} \text{coeff}_{[x_1^0, \dots, x_{2g-2}^0]} \left(\widehat{P}_{\Gamma, \Omega}(z_1\tau, \dots, z_{2g-2}\tau, \tau)\right) = \tau^{6g-6} \widehat{I}_{\Gamma, \Omega}(\tau),$$

where we used that for $A \in \mathbb{C}$

$$\text{coeff}_{[x^0]}(f(x^A)) = \text{coeff}_{[x^0]}(f(x)).$$

To finish the proof, we are left to show that $\widehat{I}_{\Gamma, \Omega}$ has the shape (3.1) with f_j holomorphic on $\mathbb{H} \cup \{\infty\}$. Everything is obvious, but the holomorphy in ∞ . To see this, recall (see [11]) that

$$\wp(z, t) = \sum_{n=0}^{\infty} a_z(n) e^{2\pi i n t} = O(a_z(0)) = O\left(\frac{e^{2\pi i z} + 10 + e^{-2\pi i z}}{e^{2\pi i z} - 2 + e^{-2\pi i z}}\right)$$

as $\tau \rightarrow i\infty$. Now the claim follows since E_2 is bounded in $i\infty$. \square

Remark 3.4. If Γ is of genus $g > 1$, by Theorem 3.2, $I_{\Gamma}(q) = \sum_{\Omega} I_{\Gamma, \Omega}(q)$ is a quasi-modular form of weight $6g - 6$. Hence $I_{\Gamma}(q) \in \mathbb{Q}[E_2, E_4, E_6]$, where E_2, E_4, E_6 are the Eisenstein series of weight 2, 4 and 6, writing, by abuse of notation, $E_i = E_i(q^2)$. Hence

$$I_{\Gamma}(q) = \sum_{\substack{2i+4j+6k=6g-6 \\ i, j, k \in \mathbb{N}_0}} c_{\Gamma}^{i, j, k} \cdot E_2^i E_4^j E_6^k$$

with $c_{\Gamma}^{i, j, k} \in \mathbb{Q}$. As described in Appendix 4.2, Theorem 2.20 gives an algorithm for computing the series

$$I_{\Gamma}(q) = \sum_{\underline{a}} N_{\underline{a}, \Gamma}^{\text{trop}} q^{2|\underline{a}|}.$$

Determining $I_{\Gamma}(q)$ up to sufficiently high order yields a linear system of equations for the coefficients $c_{\Gamma}^{i, j, k}$ which admits a unique solution. In this way, we can use our SINGULAR package to compute the representation of $I_{\Gamma}(q)$ in terms of Eisenstein series. A concrete example is presented in Example 3.5. Note that we can compute more orders than necessary, thus yielding an overdetermined system of linear equations. Theorem 3.2 predicts that such an overdetermined system still has a unique solution. For our example below, we verified this statement computationally.

Example 3.5. For the Feynman graph Γ_1 as depicted in Figure 3, we compute

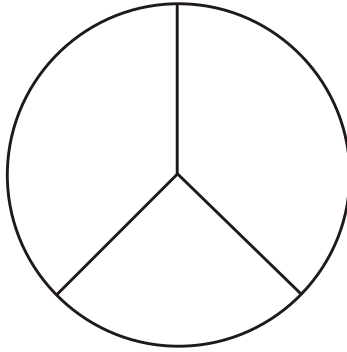
$$I_{\Gamma_1}(q) = 32q^4 + 1792q^6 + 25344q^8 + 182272q^{10} + 886656q^{12} + O(q^{14}).$$

This determines a unique solution for the coefficients

$$c_{\Gamma_1}^{0,0,2}, c_{\Gamma_1}^{0,3,0}, c_{\Gamma_1}^{1,1,1}, c_{\Gamma_1}^{2,2,0}, c_{\Gamma_1}^{3,0,1}, c_{\Gamma_1}^{4,1,0}, c_{\Gamma_1}^{6,0,0}$$

of the weight 12 monomials, which corresponds to the quasi-modular representation

$$I_{\Gamma_1}(q) = \frac{16}{1492992} (4E_6^2 + 4E_4^3 - 12E_2E_4E_6 - 3E_2^2E_4^2 + 4E_2^3E_6 + 6E_2^4E_4 - 3E_2^6).$$

FIGURE 8. Feynman graph Γ_2 of genus 3.

In the same way, for the graph Γ_2 as in Figure 8 we obtain

$$I_{\Gamma_2}(q) = 1152q^6 + 20736q^8 + 165888q^{10} + 843264q^{12} + O(q^{14})$$

leading to the representation

$$I_{\Gamma_2}(q) = \frac{24}{1492992} (3E_4^3 - 9E_2^2E_4^2 + 9E_2^4E_4 - 3E_2^6).$$

Since Γ_1 and Γ_2 are the only Feynman graphs of genus $g = 3$ without bridges, this yields the total generating function $F_3(q)$ for the Hurwitz numbers $N_{d,3}$ as the $|\text{Aut}(\Gamma_i)|^{-1}$ -weighted sum of $I_{\Gamma_1}(q)$ and $I_{\Gamma_2}(q)$:

$$\begin{aligned} F_3(q) &= \frac{1}{16}I_{\Gamma_1}(q) + \frac{1}{24}I_{\Gamma_2}(q) \\ &= \frac{1}{1492992} (4E_6^2 + 7E_4^2 - 12E_2E_4E_6 - 12E_2^2E_4^2 + 4E_2^3E_6 + 15E_2^4E_4 - 6E_2^6). \end{aligned}$$

This agrees with the formula for $F_3(q)$ given in [9, Section 3] (up to a factor of 4! explained by the choice of convention mentioned in Remark 2.2).

4. APPENDIX

4.1. Correspondence theorem. In this part of the Appendix, we prove Theorem 2.13. We do this by cutting covers of E at the preimages of the base point p_0 , thus producing a (possibly reducible) cover of the tropical line $\mathbb{TP}^1 := \mathbb{R} \cup \{-\infty\} \cup \{\infty\}$ as in [7]. We use the Correspondence Theorem of [7] relating the numbers of tropical covers to certain tuples of elements of the symmetric group that correspond to algebraic covers of \mathbb{P}^1 . We study “gluing factors” that relate the tropical multiplicity of a cover of E to the tropical multiplicity of the cut cover. These factors equal the number of ways to produce a tuple of elements of the symmetric group corresponding to a cover of an elliptic curve \mathcal{E} from a tuple corresponding to a cover of \mathbb{P}^1 .

By pairing a cover of \mathcal{E} with a monodromy representation, the Hurwitz number $N_{d,g}$ of Definition 2.1 equals the following count of tuples of permutations:

Remark 4.1 (cf. [25]). The Hurwitz numbers $N_{d,g}$ of Definition 2.1 are given by $\frac{1}{d!}$ times the number of tuples $(\tau_1, \dots, \tau_{2g-2}, \alpha, \sigma)$ of permutations in \mathbb{S}_d such that

- (1) the τ_i are transpositions for all $i = 1, \dots, 2g - 2$,
- (2) the equation $\tau_{2g-2} \circ \dots \circ \tau_1 \circ \sigma = \alpha \circ \sigma \circ \alpha^{-1}$ holds,
- (3) the subgroup $\langle \tau_1, \dots, \tau_{2g-2}, \sigma, \alpha \rangle$ acts transitively on $\{1, \dots, d\}$.

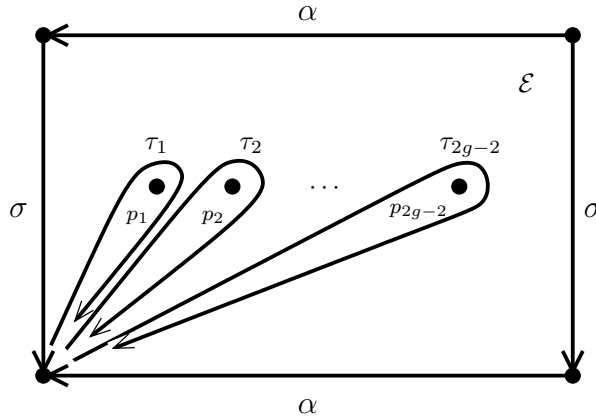


FIGURE 9. The generators of the fundamental group $\pi_1(\mathcal{E} \setminus \{p_1, \dots, p_{2g-2}\})$.

Condition (2) is explained by Figure 9 sketching the generators of the fundamental group $\pi_1(\mathcal{E} \setminus \{p_1, \dots, p_{2g-2}\})$: The rectangle represents the elliptic curve as a torus, the left side is identified with the right side and the top with the bottom. Clearly α and σ belong to the two generators of $\pi_1(\mathcal{E})$. The loops around the branch points p_1, \dots, p_{2g-2} induce the permutations $\tau_1, \dots, \tau_{2g-2}$ of sheets on the source curve. Obviously going around all branch points simultaneously is homotopic to the composition of the paths around each of the points in order p_1, \dots, p_{2g-2} , on the one hand, and on the other hand it is homotopic to the path that goes clockwise around the rectangle. This identity has to “lift” to the source curve, implying that $\tau_{2g-2} \circ \dots \circ \tau_1 = \alpha \circ \sigma \circ \alpha^{-1} \circ \sigma^{-1}$.

Let Δ be a partition of d . A permutation σ has cycle type Δ if after decomposition into a disjoint union of cycles Δ equals the partition of the lengths of the cycles. The conjugacy classes of \mathbb{S}_d are the sets of permutations with same cycle type Δ . Thus σ and $\alpha \circ \sigma \circ \alpha^{-1}$ have the same cycle type for any σ and α .

Given a tuple as in Remark 4.1 we now construct an associated tropical cover. As before, we fix the base point p_0 and the $2g - 2$ branch points p_1, \dots, p_{2g-2} (ordered clockwise) in E .

Construction 4.2. Given a tuple as in Remark 4.1 we construct a tropical cover of E with branch points p_1, \dots, p_{2g-2} as follows:

- (1) For each cycle c of σ of length m draw an edge of weight m over p_0 and label it with the corresponding cycle.
- (2) For $i = 1, \dots, 2g - 2$, successively cut or join edges over p_i according to the effect of τ_i on $\tau_{i-1} \circ \dots \circ \tau_1 \circ \sigma$. Label the new edges as before.
- (3) Glue the outgoing edges attached to points over p_{2g-2} with the edges over p_0 according to the action of α on the cycles of σ . More precisely: Glue the edge with the label $\alpha \circ c \circ \alpha^{-1}$ over p_{2g-2} to the edge with label c over p_0 .
- (4) Forget all the labels on the edges.

Note that for a cycle $c = (n_1 \dots n_l)$ of length $l \geq 2$ we have $\alpha \circ c \circ \alpha^{-1} = (\alpha(n_1) \dots \alpha(n_l))$. We use the same convention for cycles of length 1.

Example 4.3. Let $g = 2$ and $d = 4$ and consider the tuple of permutations

$$(\tau_1, \tau_2, \tau_3, \tau_4, \alpha, \sigma) = ((13), (24), (12), (13), (234), (23))$$

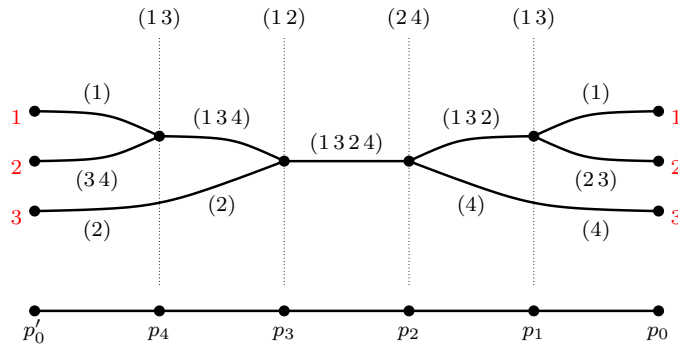


FIGURE 10. The cover of \mathbb{TP}^1 associated to a tuple of permutations.

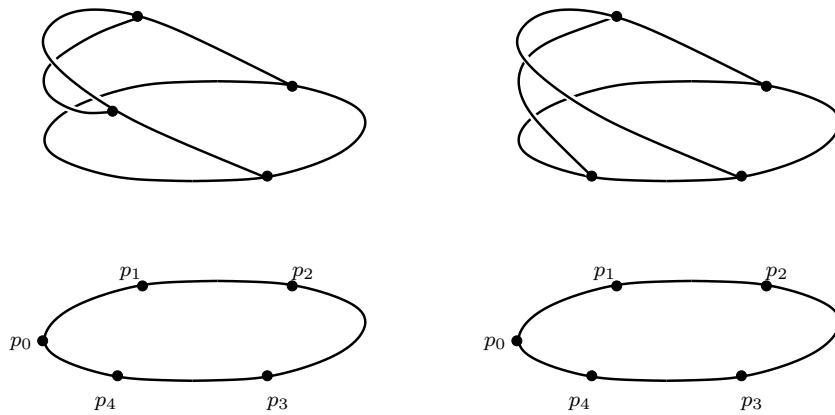


FIGURE 11. Two different gluings of the same cover of the line.

in \mathbb{S}_4 . We see that $\sigma = (23) = (1)(23)(4)$ has cycle type $(2, 1, 1)$. Moreover $\alpha \circ \sigma \circ \alpha^{-1} = (1)(2)(34) = \tau_4 \circ \dots \circ \tau_1 \circ \sigma$ is fulfilled, so the tuple contributes to the count of $N_{4,2}$. Figure 10 sketches the construction of Remark 4.2 up to the gluing step (the object can be considered as a cover of the tropical line \mathbb{TP}^1 as described below).

In the gluing step the vertices p_0 and p'_0 are going to be identified. Since we have

$$\begin{aligned} \alpha \circ (1) \circ \alpha^{-1} &= (1) \\ \wedge \alpha \circ (23) \circ \alpha^{-1} &= (34) \\ \wedge \alpha \circ (4) \circ \alpha^{-1} &= (2), \end{aligned}$$

the ends of the source curve are glued according to the red numbers in Figure 10. The result is the cover of E depicted on the left in Figure 11. Note that choosing $\alpha = (24)$ yields the same gluing, while $\alpha' = (124)$ also fulfills $\alpha' \circ \sigma \circ \alpha'^{-1} = \tau_4 \circ \dots \circ \tau_1 \circ \sigma$, but since

$$\begin{aligned} \alpha' \circ (1) \circ \alpha'^{-1} &= (2) \\ \wedge \alpha' \circ (23) \circ \alpha'^{-1} &= (34) \\ \wedge \alpha' \circ (4) \circ \alpha'^{-1} &= (1), \end{aligned}$$

it provides a different gluing, sketched on the right side of Figure 11. In particular the combinatorial types of the source curves are different.

Now we describe how to cut tropical covers of E in general, thus producing covers of a line. As usual, we neglect edge lengths — to be precise, they have to adapted accordingly.

Construction 4.4. To every cover $\pi : C \rightarrow E$ of degree d we associate a (possibly disconnected) tropical cover $\tilde{\pi} : \tilde{C} \rightarrow \mathbb{TP}^1$ of the line \mathbb{TP}^1 of the same degree, by cutting E at p_0 and the source curve C at every preimage of p_0 .

For the definition of (connected) tropical covers of \mathbb{TP}^1 , see [7]. This definition can easily be generalized by allowing the source curve to be disconnected, and adapting the multiplicity accordingly as follows. Notice that the multiplicity of a single edge of weight m covering \mathbb{TP}^1 is $\frac{1}{m}$ (this case is not taken care of in [7] where it is implicitly assumed that every source curve contains at least one vertex). The multiplicity of a cover $\tilde{\pi} : \tilde{C} \rightarrow \mathbb{TP}^1$ is

$$\text{mult}(\tilde{\pi}) := \prod_K \frac{1}{w_K} \cdot |\text{Aut}(\tilde{\pi})| \cdot \prod_e w_e, \quad (4.1)$$

where the first product goes over all connected components K of \tilde{C} that just consist of one single edge mapping to \mathbb{TP}^1 with weight w_K and the second product goes over all bounded edges e of \tilde{C} , with w_e denoting their weight. Note that in [7], the factor $|\text{Aut}(\tilde{\pi})|$ is simplified to $\frac{1}{2}^{l_1+l_2}$, where l_1 denotes the number of balanced forks (i.e., adjacent ends of the same weight) and l_2 denotes the number of wieners (i.e. pairs of bounded edges of the same weight sharing both end vertices). Since we allow disconnected covers, we will have other contributions to the automorphism group: connected components consisting of single edges of the same weight as above can be permuted. So we get a contribution of $\frac{1}{r!}$ to $|\text{Aut}(\tilde{\pi})|$ if for a certain weight m there are exactly r copys of connected components consisting of a single edge of weight m .

For a cover $\pi : C \rightarrow E$, we denote by Δ the partition of d given by the weights of the edges over p_0 . For the cut cover $\tilde{\pi}$ (see Construction 4.4) these are exactly the ramification profiles over $-\infty$ and ∞ .

Example 4.5. The two covers of E depicted in Figure 11 cut at p_0 both give a cover of the line as sketched in Figure 10 (where we dropped the labels on the edges). The multiplicity of the cover of the line equals the product of the weight of the bounded edges, i.e., $3^2 \cdot 4$, since there are no automorphisms.

Example 4.6. Figure 12 shows a disconnected cover $\tilde{\pi}$ of the line of degree 17 with 6 (simple) ramifications and profiles $(4, 4, 4, 1, 1, 1, 1)$ over the ends. Its multiplicity equals

$$\text{mult}(\tilde{\pi}) = \underbrace{\left(\frac{1}{2}\right)^2 \cdot \frac{1}{2} \cdot \frac{1}{2!} \cdot \frac{1}{3!}}_{=|\text{Aut}(\tilde{\pi})|} \cdot \underbrace{\frac{1}{4 \cdot 4 \cdot 1 \cdot 1 \cdot 1}}_{=\prod_K \frac{1}{w_K}} \cdot \underbrace{4 \cdot 2 \cdot 2 \cdot 2 \cdot 2}_{=\prod_e w_e} = \frac{1}{24},$$

where the first factor contributing to the automorphisms comes from the two balanced forks, the second from the wiener and the other two from two single-edge components of weight 4 and three single-edge components of weight 1 respectively.

The Correspondence Theorem in [7] matches tropical covers of \mathbb{TP}^1 as above with algebraic covers of \mathbb{P}^1 having two ramifications of profile Δ over 0 and ∞ respectively and only simple ramifications else.

Similar to Remark 4.1, the associated Hurwitz numbers can be written in terms of tuples of elements of the symmetric group.

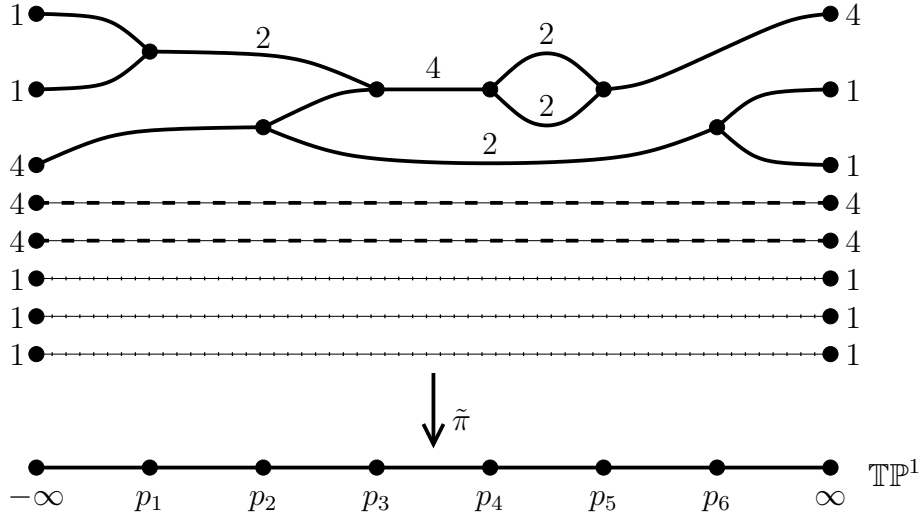


FIGURE 12. A (disconnected) tropical cover of the line.

Remark 4.7. The double Hurwitz number $H_{d,g}(\mathbb{P}^1, \Delta, \Delta)$ counting the number of (isomorphism classes of) covers $\phi : \mathcal{C} \rightarrow \mathbb{P}^1$ of degree d (each weighted with $\frac{1}{|\text{Aut}(\phi)|}$), where \mathcal{C} is a possibly disconnected curve such that the sum of the genera of its connected components equals g , having ramification profile Δ over 0 and ∞ and only simple ramifications else, equals $\frac{1}{d!}$ times the number of tuples $(\tau_1, \dots, \tau_{2g-2}, \sigma, \sigma')$ in \mathbb{S}_d such that

- σ and σ' are permutations of cycle type Δ ,
- the τ_i are transpositions for all $i = 1, \dots, 2g - 2$,
- the equation $\sigma' \circ \tau_{2g-2} \circ \dots \circ \tau_1 \circ \sigma = \text{id}_{\mathbb{S}_d}$ holds.

Note that as in Definition 2.1, it follows from the Riemann-Hurwitz formula that the number of simple ramifications is $2g - 2$. The condition $\sigma' \circ \tau_{2g-2} \circ \dots \circ \tau_1 \circ \sigma = \text{id}_{\mathbb{S}_d}$ reflects the fact that the fundamental group $\pi_1(\mathbb{P}^1)$ is trivial. We do not include a condition about transitivity here, since we allow also disconnected covers.

As in Construction 4.2, we can associate a tropical cover of the line to a tuple as in Remark 4.7. The procedure is the same, we just drop the gluing step (3). The statement of the Correspondence Theorem 5.28 in [7] is that for a fixed tropical cover $\tilde{\pi} : \tilde{\mathcal{C}} \rightarrow \mathbb{TP}^1$, the tropical multiplicity equals $\frac{1}{d!}$ times the number of tuples that yield $\tilde{\pi}$ under the above procedure.

We now relate the tuples in Remarks 4.1 and 4.7. resp. the multiplicities of a tropical cover $\pi : \mathcal{C} \rightarrow E$ and the cut cover $\tilde{\pi} : \tilde{\mathcal{C}} \rightarrow \mathbb{TP}^1$ of Construction 4.4.

Definition 4.8. Given a cover $\pi : \mathcal{C} \rightarrow E$ and the cut cover $\tilde{\pi} : \tilde{\mathcal{C}} \rightarrow \mathbb{TP}^1$ of Construction 4.4, we choose a tuple $(\tau_1, \dots, \tau_{2g-2}, \sigma, \sigma')$ that yields $\tilde{\pi}$ when applying Construction 4.2 (minus the gluing in step (3)). We define $n_{\tilde{\pi}, \pi}$ to be the number of $\alpha \in \mathbb{S}_d$ satisfying $\alpha \circ \sigma \circ \alpha^{-1} = \sigma'$ and, when labeling $\tilde{\pi}$ with cycles according to our choice of tuple $(\tau_1, \dots, \tau_{2g-2}, \sigma, \sigma')$ and performing step (3) and (4) of Construction 4.2 (gluing and forgetting the cycle labels), we obtain π .

Note that $n_{\tilde{\pi}, \pi}$ is well-defined (i.e., does not depend on the choice of the tuple $(\tau_1, \dots, \tau_{2g-2}, \sigma, \sigma')$). This is true since any other representative $(\bar{\tau}_1, \dots, \bar{\tau}_{2g-2}, \bar{\sigma}, \bar{\sigma}')$

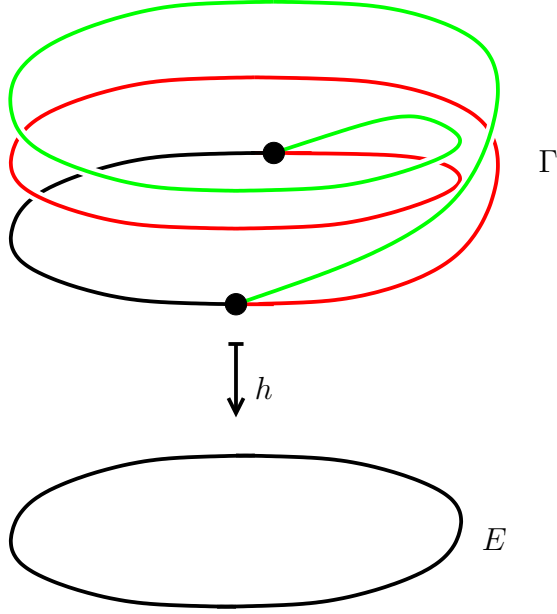


FIGURE 13. A tropical elliptic cover with a long wiener. The two wiener-edges (i.e., the red and the green edge) have the same weight.

is a conjugate of $(\tau_1, \dots, \tau_{2g-2}, \sigma, \sigma')$ and therefore the desired $\bar{\alpha}$ are in one-to-one correspondence to the desired α .

Proposition 4.9. *For a cover $\pi : C \rightarrow E$ with partition $\Delta = (m_1, \dots, m_r)$ over the base point, the number $n_{\tilde{\pi}, \pi}$ of Definition 4.8 is given by*

$$n_{\tilde{\pi}, \pi} = m_1 \cdot \dots \cdot m_r \cdot \frac{|\text{Aut}(\tilde{\pi})|}{|\text{Aut}(\pi)|}.$$

Proof. As in the definition of $n_{\tilde{\pi}, \pi}$ (see Definition 4.8), fix a tuple of permutations $(\tau_1, \dots, \tau_{2g-2}, \sigma, \sigma')$ that yields $\tilde{\pi}$ when applying Construction 4.2 minus the gluing step (3).

The set of α such that $\alpha \circ \sigma \circ \alpha^{-1} = \sigma'$ is a coset of the stabilizer of σ with respect to the operation of \mathbb{S}_d on itself via conjugation: $(\alpha, \sigma) \mapsto \alpha \circ \sigma \circ \alpha^{-1}$. Assume that Δ consists of k_i weights w_i for $i = 1, \dots, s$, then this stabilizer is isomorphic to the semidirect product $\prod_{i=1}^s C_{w_i}^{k_i} \rtimes \prod_{i=1}^s \mathbb{S}_{k_i}$ of cyclic groups C_{w_i} of length w_i and symmetric groups \mathbb{S}_{k_i} . This can be seen as follows: for each weight w_i (i.e., length of a cycle of σ) we can choose an element of \mathbb{S}_{k_i} permuting the cycles of length w_i in σ . Assume the cycle c_1 of σ is mapped to the cycle c_2 by this permutation. Then we consider permutations α' in the group of bijections of the entries of c_2 to the entries of c_1 that satisfy $\alpha' \circ c_1 \circ \alpha'^{-1} = c_2$, there are w_i such α' (and they form a cyclic group). Since the cycles of σ are disjoint, the choices for α' for each pair of cycles (c_1, c_2) where c_1 is mapped to c_2 under the permutations in \mathbb{S}_{k_i} that we choose for each i can be combined to a unique α in the stabilizer of σ .

We label the edges of \tilde{C} with cycles as given by the choice of our tuple. Transferred to our situation, the argument above shows that when searching for α that satisfy both requirements of Definition 4.8, we always get the contributions from the C_{w_i} , (leading to a factor of $\prod_{i=1}^s w_i^{k_i} = m_1 \cdot \dots \cdot m_r$). To prove the lemma, it remains to

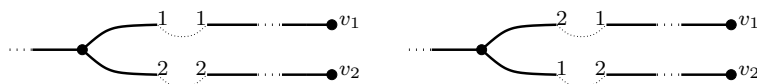


FIGURE 14. Two ways to glue a fork to two distinguishable ends.

see that $\frac{|\text{Aut}(\tilde{\pi})|}{|\text{Aut}(\pi)}$ equals the number of ways to choose permutations of the cycles of the same length (resp. permutations of the ends of \tilde{C}) that correspond to a gluing of $\tilde{\pi}$ equal to π when applying Construction 4.2, step (3).

So let us now analyze the automorphism groups and compare the quotient of their sizes to the possibilities to glue the cover $\tilde{\pi}$ (with labeled ends) to π .

The automorphism group of $\tilde{\pi}$ is, as mentioned above, a direct product of symmetric groups each corresponding to a wiener, a balanced fork or the set of connected components consisting of a single edge of fixed weight. The automorphism group of π is a direct product of symmetric groups of size two corresponding to wieners. Notice that we can have long wieners as in Figure 13, where the two edges of the same weight are curled equally. Clearly automorphisms that come from wieners that are not cut cancel in the quotient and we can thus disregard them. Since therefore all contributions to the automorphism groups we have to consider come from ends of \tilde{C} , and the possibilities to glue the cover $\tilde{\pi}$ to π also only depend on the ends of \tilde{C} , we can analyze the situation locally on the level of the involved ends.

We say that an end of \tilde{C} is distinguishable if it is not part of a balanced fork and not an end of a component consisting of a single edge. Distinguishable ends do not contribute to the automorphisms of $\tilde{\pi}$.

We have to consider several cases. We first consider cases not involving connected components consisting of a single edge.

- (1) If we glue two distinguishable ends of \tilde{C} to get back C , there are no choices for different gluings. Since distinguishable ends do not contribute to the automorphisms, the equality of contributions from these ends holds.
- (2) Assume that an edge of C is cut in such a way that one of the ends is part of a balanced fork and the other is distinguishable. Then obviously there are 2 ways to glue, see Figure 14. The balanced fork contributes with a factor 2 to $|\text{Aut}(\tilde{\pi})|$. After gluing, the fork is not part of a wiener, so the contribution to $|\text{Aut}(\pi)|$ is 1. Again, we see that the contributions coming from these ends to the quotient of the sizes of the automorphism groups on the one hand and to the possibilities of gluing on the other hand coincide.
- (3) If two balanced forks are glued, we obtain a wiener. The contribution to $|\text{Aut}(\tilde{\pi})|$ and $|\text{Aut}(\pi)|$ is 4 and 2 respectively. The ways to glue the forks to a wiener is 2, as illustrated in Figure 15.

Now we have to consider cases involving ends of connected components consisting of a single edge, say of weight m . Assume there are l components consisting of a single edge of weight m . These ends contribute a factor of $l!$ to $|\text{Aut}(\tilde{\pi})|$.

- (4) Assume that l_0 of the components are not part of a long wiener after gluing. They do not contribute to the automorphisms of π . Note that the components nevertheless might be attached to balanced forks. In this case the fork is either part of a pseudo-wiener in π (i.e., two edges sharing the same end vertices and having the same weight, but curled differently, see Figure 16) or the two edges of the fork have different end vertices.

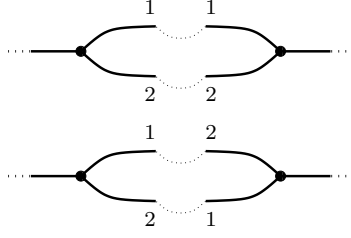


FIGURE 15. Gluing two balanced forks to a wiener.

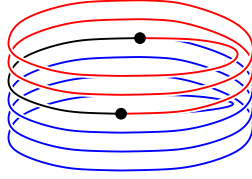


FIGURE 16. A cover with a pseudo-wiener.

Let us now determine the number of ways to glue these ends of \tilde{C} to get back C . We can choose l_0 of the l single-edge-components, and distribute them to l_0 distinguishable places. Also, we get a factor of 2 for each balanced fork involved. The result is $\binom{l}{l_0} \cdot l_0! \cdot 2^f$, where f is the number of balanced forks involved.

The remaining $l - l_0$ components must be part of long wieners in π . Let n be the number of long wieners in π , giving a contribution of 2^n to $|\text{Aut}(\pi)|$, then $2n$ balanced forks from $\tilde{\pi}$ are involved in the gluing process contributing with a factor of 2^{2n} to $|\text{Aut}(\tilde{\pi})|$. The number of ways to glue is the number of ways to distribute the $l - l_0$ components to $l - l_0$ gluing places and a factor of 2 for every wiener we get, just as in Figure 15. Altogether the contribution to the number of gluings providing the desired cover equals

$$\binom{l}{l_0} \cdot l_0! \cdot 2^f \cdot (l - l_0)! \cdot 2^n = l! \cdot 2^f \cdot 2^n.$$

The contribution to the quotient of the sizes of the automorphism groups equals

$$\frac{l! \cdot 2^f \cdot 2^{2n}}{2^n}.$$

Obviously, the two expressions coincide and we are done. \square

We are now ready to prove the Correspondence Theorem 2.13, that is the equality of tropical and algebraic Hurwitz numbers of simply ramified covers of elliptic curves.

Proof of Theorem 2.13. By Remark 4.1

$$N_{d,g} = \frac{1}{d!} \cdot \#\{(\tau_1, \dots, \tau_{2g-2}, \alpha, \sigma)\},$$

where $\alpha, \sigma, \tau_i \in \mathbb{S}_d$, the τ_i are transpositions, the equality $\tau_{2g-2} \circ \dots \circ \tau_1 \circ \sigma = \alpha \circ \sigma \circ \alpha^{-1}$ holds and $\langle \tau_1, \dots, \tau_{2g-2}, \sigma \rangle$ acts transitively on the set $\{1, \dots, d\}$. We can group the

tuples in the set according to the tropical cover $\pi : C \rightarrow E$ they provide under Construction 4.2 and write the sum above as

$$\frac{1}{d!} \cdot \sum_{\pi} \# \{(\tau_1, \dots, \tau_{2g-2}, \alpha, \sigma) \text{ yielding the cover } \pi\}.$$

For a fixed cover π , instead of counting tuples yielding π , we can count tuples $(\tau_1, \dots, \tau_{2g-2}, \sigma, \sigma')$ yielding the cut cover $\tilde{\pi}$ from Construction 4.4 and then multiply with the number of appropriate α , i.e., with $n_{\tilde{\pi}, \pi}$ (see Definition 4.8):

$$\frac{1}{d!} \cdot \sum_{\pi} \# \{(\tau_1, \dots, \tau_{2g-2}, \sigma, \sigma') \text{ that provide the cover } \tilde{\pi}\} \cdot n_{\tilde{\pi}, \pi}.$$

By [7] (see also Remark 4.7) the count of the tuples yielding a cover $\tilde{\pi}$ divided by $d!$ coincides with its tropical multiplicity $\text{mult}(\tilde{\pi}) = \frac{1}{|\text{Aut}(\tilde{\pi})|} \cdot \prod_K \frac{1}{w_K} \cdot \prod_{\tilde{e}} w_{\tilde{e}}$ where the first product goes over all components K consisting of a single edge of weight w_K and the second product goes over all bounded edges \tilde{e} of C and $w_{\tilde{e}}$ denotes their weight (see (4.1)). Using Proposition 4.9, the number $n_{\tilde{\pi}, \pi}$ can be substituted by $\prod_{e'} w_{e'}^{c_{e'}} \cdot \frac{|\text{Aut}(\tilde{\pi})|}{|\text{Aut}(\pi)|}$ where the product goes over all edges e' of C that contain a preimage of the base point p_0 of E and $c_{e'}$ denotes the number of preimages in e' , $c_{e'} = \#(\pi^{-1}(p_0) \cap e')$. We obtain

$$N_{d,g} = \sum_{\pi} \frac{1}{|\text{Aut}(\tilde{\pi})|} \cdot \prod_{\tilde{e}} w_{\tilde{e}} \cdot \prod_K \frac{1}{w_K} \cdot \prod_{e'} w_{e'}^{c_{e'}} \cdot \frac{|\text{Aut}(\tilde{\pi})|}{|\text{Aut}(\pi)|}.$$

An edge e' of C of weight $w_{e'}$ having $c_{e'}$ preimages over the base point provides exactly $c_{e'} - 1$ single-edge-components of weight $w_{e'}$ in the cut cover $\tilde{\pi}$. Vice versa, each such component comes from an edge with multiple preimages over the base point. Therefore the expression $\prod_K \frac{1}{w_K} \cdot \prod_{e'} w_{e'}^{c_{e'}}$ simplifies to $\prod_{e'} w_{e'}$. We obtain

$$N_{d,g} = \sum_{\pi} \frac{1}{|\text{Aut}(\pi)|} \prod_e w_e = N_{d,g}^{\text{trop}}$$

and the theorem is proved. \square

4.2. Implementation in Singular. Theorem 2.20 yields a method for computing tropical Hurwitz numbers of an elliptic curve via path integrals. By the Correspondence Theorem 2.13 these numbers coincide with the classical Gromov-Witten invariants. We have implemented the resulting algorithm for computing Gromov-Witten invariants in the package `ellipticcovers.lib` [5] for the computer algebra system SINGULAR [8]. Given a Feynman graph Γ of genus g , the key function of the package computes the numbers $N_{\underline{a}, \Gamma}^{\text{trop}} \in \mathbb{N}$ associated to a given branch type $\underline{a} \in \mathbb{N}_0^{3g-3}$.

In this section, we illustrate the algorithm and the implementation by an example: Our package can be loaded in SINGULAR by

```

SINGULAR
A Computer Algebra System for Polynomial Computations

by: W. Decker, G.-M. Greuel, G. Pfister, H. Schoenemann
FB Mathematik der Universitaet, D-67653 Kaiserslautern

/ Development
/ version 4
0<
\ Sept 2013
\

> LIB "ellipticcovers.lib";

```

Consider the graph Γ of genus 3 as depicted in Figure 3. In SINGULAR it can be created by specifying lists of vertices and edges:

```
> graph Gamma = makeGraph(list(1,2,3,4),
  list(list(1,3),list(1,2),list(1,2),list(2,4),list(3,4),list(3,4)));
> Gamma;
[[1, 3], [1, 2], [1, 2], [2, 4], [3, 4], [3, 4]]
Graph with 4 vertices and 6 edges
```

We create the polynomial ring $R = \mathbb{Q}(x_1, \dots, x_4)[q_1, \dots, q_6]$ with one rational variable x_i for each vertex and one polynomial variable q_i for each edge of Γ :

```
> ring R = (0,x(1..4)),q(1..6),dp;
```

The propagator coefficient associated to an edge $\{x, y\}$ of degree d with vertices x and y is

$$P_{\{x,y\},d} = \begin{cases} \frac{xy}{(x^2-y^2)^2} & \text{for } d = 0. \\ \sum_{j|d} j \frac{x^{4j}+y^{4j}}{(xy)^{2j}} & \text{for } d > 0 \end{cases}$$

This formula is implemented in the function `propagator`. As shown in Theorem 2.22, it yields the degree $2d$ coefficient of the propagator series $-P(\frac{x}{y}, q)$ in the formal variable q as a rational function of x and y . Technically, `propagator` returns a SINGULAR number, that is, an element of the coefficient ring $\mathbb{Q}(x_1, \dots, x_4)$ of R :

```
> propagator(list(x(1),x(2)),0);
(x(1)^2*x(2)^2)/(x(1)^4-2*x(1)^2*x(2)^2+x(2)^4)
> propagator(list(x(1),x(2)),3);
(3*x(1)^12+x(1)^8*x(2)^4+x(1)^4*x(2)^8+3*x(2)^12)/(x(1)^6*x(2)^6)
```

The function `propagator` can also be applied to a graph Γ and a list \underline{a} of integers. Here a_i is the degree of the i -th edge e_i in the list `Gamma.edges` of edges of Γ over a fixed base point. For this input, the function returns the product

$$P_{\underline{a},\Gamma} = \prod_i P_{e_i, a_i}$$

of the propagator factors corresponding to the edges:

```
> number P = propagator(Gamma, list(0,0,0,0,1,1));
```

To obtain the path integral, we have to compute the residue of $\frac{P}{x_1 x_2 x_3 x_4}$ with respect to all variables in all possible orderings. Computing the residue of $\frac{P}{x_1}$ with respect to x_1 amounts to computing the constant coefficient of the Laurent series of P in x_1 . For example, the first two steps with respect to the ordering (x_3, x_1, x_2, x_4) can be done by

```
> number P3 = computeConstant(P, x(3));
> computeConstant(P3, x(1));
(2*x(4)^6)/(x(2)^6-2*x(2)^4*x(4)^2+x(2)^2*x(4)^4)
```

The evaluation of the path integral for a specific ordering of the variables (by applying `computeConstant` iteratively) is available in the function `evaluateIntegral`:

```
> evaluateIntegral(P, list(x(3),x(1),x(2),x(4)));
```

```
4
```

The sum of this over all possible orderings of variables is the Gromov-Witten invariant $N_{\underline{a},\Gamma}^{trop}$, which is obtained from the rational function P by the command:

```
> gromovWitten(P);
```

```
8
```

In our example, there are only two non-zero contributions corresponding to the orderings (x_3, x_1, x_2, x_4) and (x_4, x_2, x_1, x_3) . The function `gromovWitten` can also be applied directly to the graph G and the list \underline{a} :

```
> gromovWitten(Gamma, list(0,0,0,0,1,1));
8
```

As the sum of $N_{\underline{a},\Gamma}$ over all partitions of d into non-negative summands corresponding to the edges of Γ , we obtain

$$|\text{Aut}(\Gamma)| \cdot N_{d,\Gamma}^{\text{trop}} = \sum_{|\underline{a}|=d} N_{\underline{a},\Gamma}^{\text{trop}}$$

by the following command:

```
> gromovWitten(Gamma,2);
32
```

The contributions of the different branch types \underline{a} can be read off from the truncated multigraded generating function

$$\sum_{|\underline{a}| \leq d} N_{\underline{a},\Gamma}^{\text{trop}} \cdot q^{\underline{a}}$$

which is returned by the following command:

```
> generatingFunction(Gamma,2);
8*q(1)^2+8*q(2)*q(3)+8*q(4)^2+8*q(5)*q(6)
```

For the Feynman graph of genus 2 with 2 vertices and 3 edges, we compute the multigraded generating function up to degree 3:

```
> graph Gamma = makeGraph(list(1,2),
list(list(1,2),list(1,2),list(1,2)));
> ring R = (0,x(1..2)),q(1..3),dp;
> generatingFunction(Gamma,3);
24*q(1)^3+20*q(1)^2*q(2)+20*q(1)*q(2)^2+24*q(2)^3+20*q(1)^2*q(3)
+20*q(2)^2*q(3)+20*q(1)*q(3)^2+20*q(2)*q(3)^2+24*q(3)^3
+4*q(1)^2+4*q(1)*q(2)+4*q(2)^2+4*q(1)*q(3)+4*q(2)*q(3)+4*q(3)^2
```

REFERENCES

- [1] Mohammed Abouzaid. Morse homology, tropical geometry and homological mirror symmetry for toric varieties. *Selecta Math.*, 15(2):189–270, 2009. arXiv:math/0610004.
- [2] George Andrews and Simon Rose. MacMahon’s sum of divisor function, Chebyshev polynomials and quasimodular forms. *J. Reine Angew. Math.*, pages 97–103, 2013.
- [3] Serguei Barannikov. Semi-infinite hodge structures and mirror symmetry for projective spaces. Preprint, arXiv:0010157, 2000.
- [4] Benoît Bertrand, Erwan Brugallé, and Grigory Mikhalkin. Tropical Open Hurwitz numbers. *Rend. Semin. Mat. Univ. Padova*, 125:157–171, 2011.
- [5] Janko Boehm, Kathrin Bringmann, Arne Buchholz, and Hannah Markwig. ellipticcovers.lib. A SINGULAR 4 library for Gromov-Witten invariants of elliptic curves, 2013. Available in the latest version of Singular at <https://github.com/jankoboehm/Sources.git>.
- [6] Kathrin Bringmann, Amanda Folsom, and Karl Mahlburg. Quasimodular forms and $sl(m|m)^\wedge$ characters. *Ramanujan journal, special volume in honor of B. Gordon, accepted for publication*.
- [7] Renzo Cavalieri, Paul Johnson, and Hannah Markwig. Tropical Hurwitz numbers. *J. Algebr. Comb.*, 32(2):241–265, 2010. arXiv:0804.0579.
- [8] Wolfram Decker, Gert-Martin Greuel, Gerhard Pfister, and Hans Schönemann. SINGULAR 3-1-6. A computer algebra system for polynomial computations, Centre for Computer Algebra, University of Kaiserslautern, 2013. <http://www.singular.uni-kl.de>.
- [9] Robbert Dijkgraaf. *The moduli space of curves*, volume 129 of *Progr. Math.*, chapter Mirror symmetry and elliptic curves, pages 149–163. Birkhäuser Boston, 1995.
- [10] Chongying Dong, Geoffrey Mason, and Kiyokazu Nagatomo. Quasi-modular forms and trace functions associated to free boson and lattice vertex operator algebras. *Int. Math. Res. Notices*, pages 409–427, 2001.
- [11] Martin Eichler and Don Zagier. *The theory of Jacobi forms*, volume 55 of *Progress in Mathematics*. Birkhäuser, Boston, 1985.

- [12] Huijun Fan, Tyler Jarvis, and Yongbin Ruan. The Witten equation, mirror symmetry, and quantum singularity theory. *Ann. of Math.*, 2013.
- [13] Bohan Fang, Chiu-Chu Melissa Liu, David Treumann, and Eric Zaslow. T-duality and homological mirror symmetry for toric varieties. *Adv. Math.*, 229(3):1875–1911, 2012.
- [14] Mark Gross. Mirror Symmetry for \mathbb{P}^2 and tropical geometry. *Adv. Math.*, 224(1):169–245, 2010. arXiv:0903.1378.
- [15] Mark Gross and Bernd Siebert. Mirror Symmetry via logarithmic degeneration data I. *J. Differential Geom.*, 72:169–338, 2006. arXiv:math.AG/0309070.
- [16] Mark Gross and Bernd Siebert. Mirror Symmetry via logarithmic degeneration data II. *J. Algebraic Geom.*, 19(4):679–780, 2010. arXiv:0709.2290.
- [17] Robin Hartshorne. *Algebraic Geometry*. Springer, 1977.
- [18] Masanobu Kaneko and Don Zagier. *The moduli space of curves*, volume 129 of *Progr. Math.*, chapter A generalized Jacobi theta function and quasimodular forms., pages 149–163. Birkhäuser Boston, 1995.
- [19] Anton Kapustin, Maximilian Kreuzer, and Karl-Georg Schlesinger, editors. *Homological mirror symmetry. New developments and perspectives.*, volume 757 of *Lecture Notes in Physics*. Springer, Berlin, 2009.
- [20] Max Koecher and Aloys Krieg. *Elliptische Funktionen und Modulformen*. Springer, Berlin, 2007.
- [21] Si Li. Feynman graph integrals and almost modular forms. *Comm. in Number Theory and Physics*, 6(1):129–157, 2012. arXiv:1112.4015.
- [22] Hannah Markwig and Johannes Rau. Tropical descendant Gromov-Witten invariants. *Manuscripta Math.*, 129(3):293–335, 2009. arXiv:0809.1102.
- [23] Grigory Mikhalkin. Enumerative tropical geometry in \mathbb{R}^2 . *J. Amer. Math. Soc.*, 18:313–377, 2005. arXiv:math.AG/0312530.
- [24] Ricardo Castaño-Bernard and Yan Soibelman and Ilia Zharkov, editor. *Mirror symmetry and tropical geometry*, volume 527 of *Contemporary Mathematics*, Providence, RI, 2010. American Mathematical Society. Papers from the NSF-CBMS Conference held at Kansas State University, Manhattan, KS, December 1317, 2008.
- [25] Mike Roth and Noriko Yui. Mirror symmetry for elliptic curves: the A-model (fermionic) counting. In *Motives, quantum field theory, and pseudodifferential operators*, volume 12 of *Clay Math. Proc.*, pages 245–283. Amer. Math. Soc., Providence, RI, 2010.
- [26] Masa-Hiko Saito, Shinobu Hosono, and Kōta Yoshioka, editors. *New developments in algebraic geometry, integrable systems and mirror symmetry*, volume 59 of *Advanced Studies in Pure Mathematics*, Tokyo, 2010. Mathematical Society of Japan. Papers from the conference held at Kyoto University, Kyoto, January 711, 2008.
- [27] Kazushi Ueda and Masahito Yamazaki. Homological mirror symmetry for toric orbifolds of toric del Pezzo surfaces. *J. Reine Angew. Math.*, 680:1–22, 2013.

JANKO BÖHM, FACHBEREICH MATHEMATIK, UNIVERSITÄT KAISERSLAUTERN, POSTFACH 3049, 67653 KAISERSLAUTERN, GERMANY

E-mail address: boehm@mathematik.uni-kl.de

KATHRIN BRINGMANN, MATHEMATICAL INSTITUTE, UNIVERSITY OF COLOGNE, WEYERTAL 86-90, 50931 COLOGNE, GERMANY

E-mail address: kbringma@math.uni-koeln.de

ARNE BUCHHOLZ, CLUSTER OF EXCELLENCE M^2CI , FACHRICHTUNG MATHEMATIK, UNIVERSITÄT DES SAARLANDES, POSTFACH 151150, 66041 SAARBRÜCKEN, GERMANY

E-mail address: buchholz@math.uni-sb.de

HANNAH MARKWIG, UNIVERSITÄT DES SAARLANDES, FACHRICHTUNG MATHEMATIK, POSTFACH 151150, 66041 SAARBRÜCKEN, GERMANY

E-mail address: hannah@math.uni-sb.de